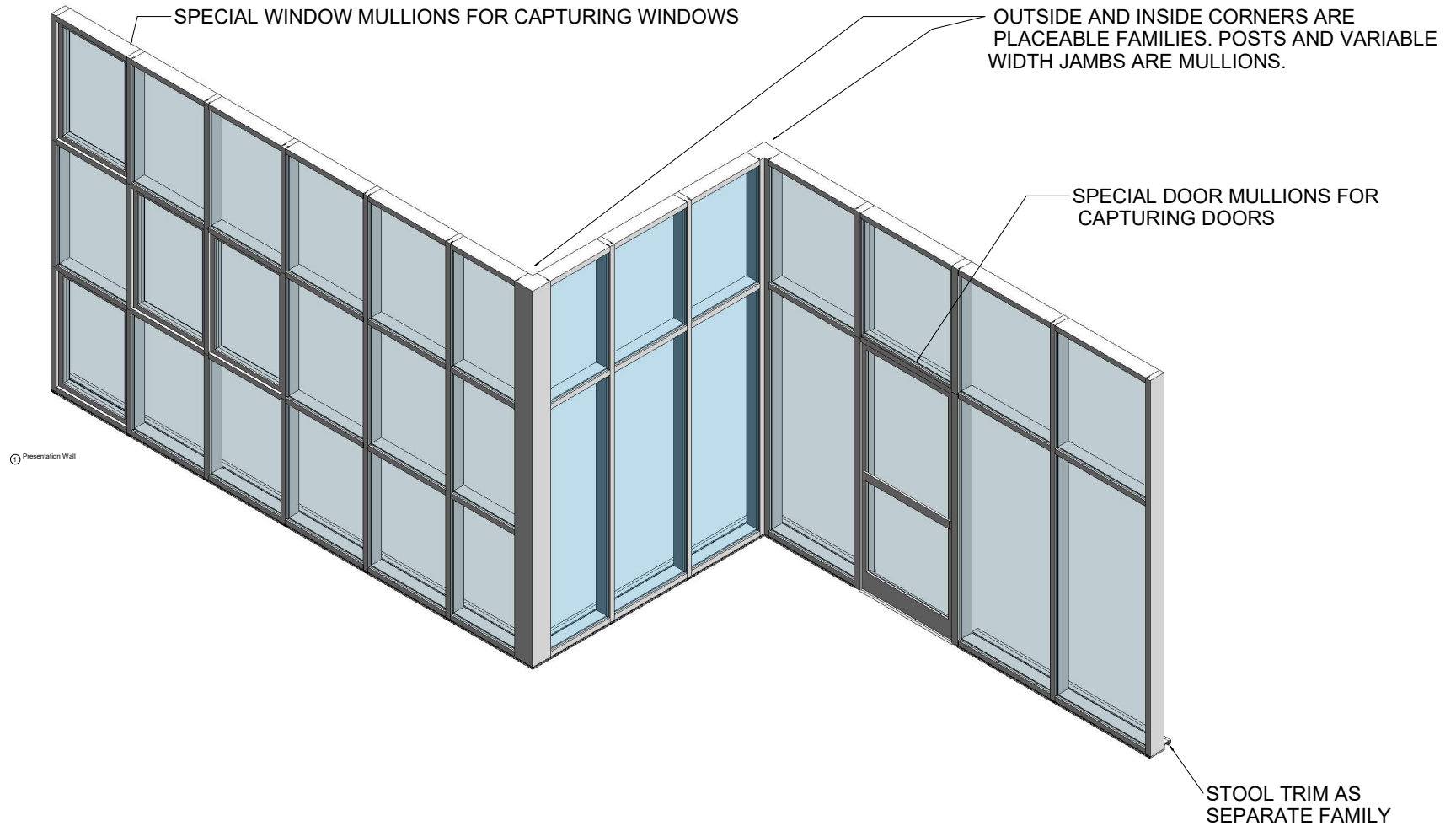


THIS PRODUCT LINE IS THERMALLY BROKEN.



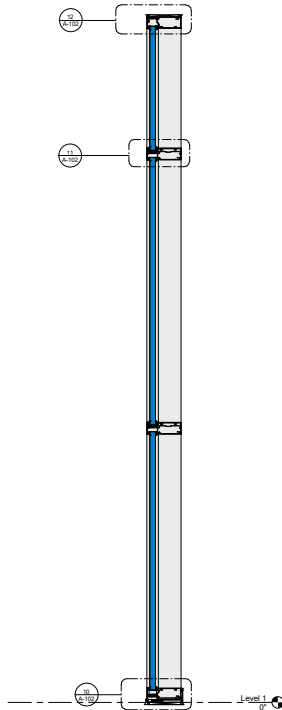
**KAWNEER AN ARCONIC COMPANY**

555 Guthridge Ct.  
Technology Park/Atlanta  
Norcross, GA 30092 USA  
Tel: +1 770 449 5555

## Plan, Elevations & Section

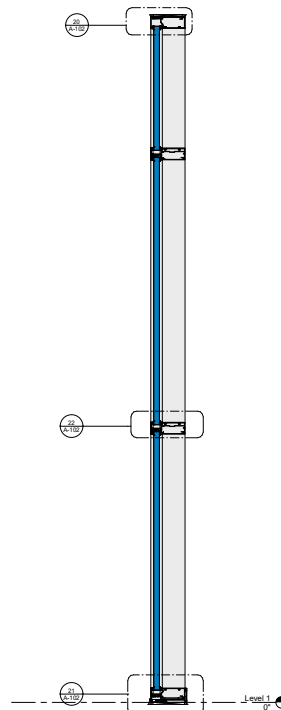


③ Basic Wall Example - Outside Glazed  
1" = 1'-0"



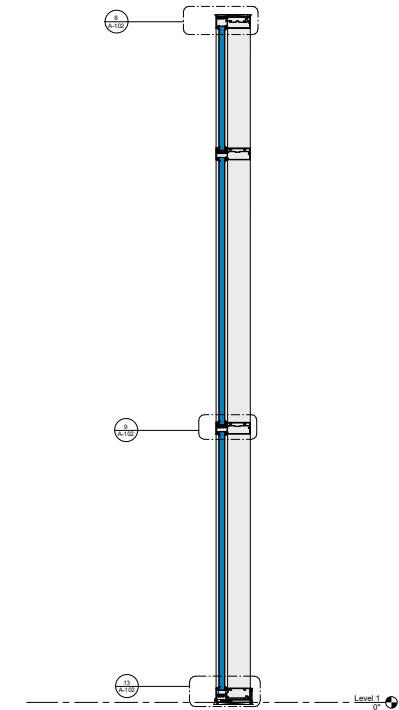
③ Outside Glazed  
1 1/2" = 1'-0"

③ Basic Wall Example - Outside Glazed Stops  
Up  
1" = 1'-0"

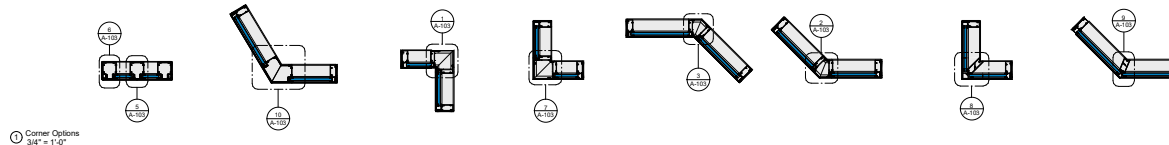


④ Outside Glazed Stops Up  
1 1/2" = 1'-0"

③ Basic Wall Example - Inside Glazed  
1" = 1'-0"

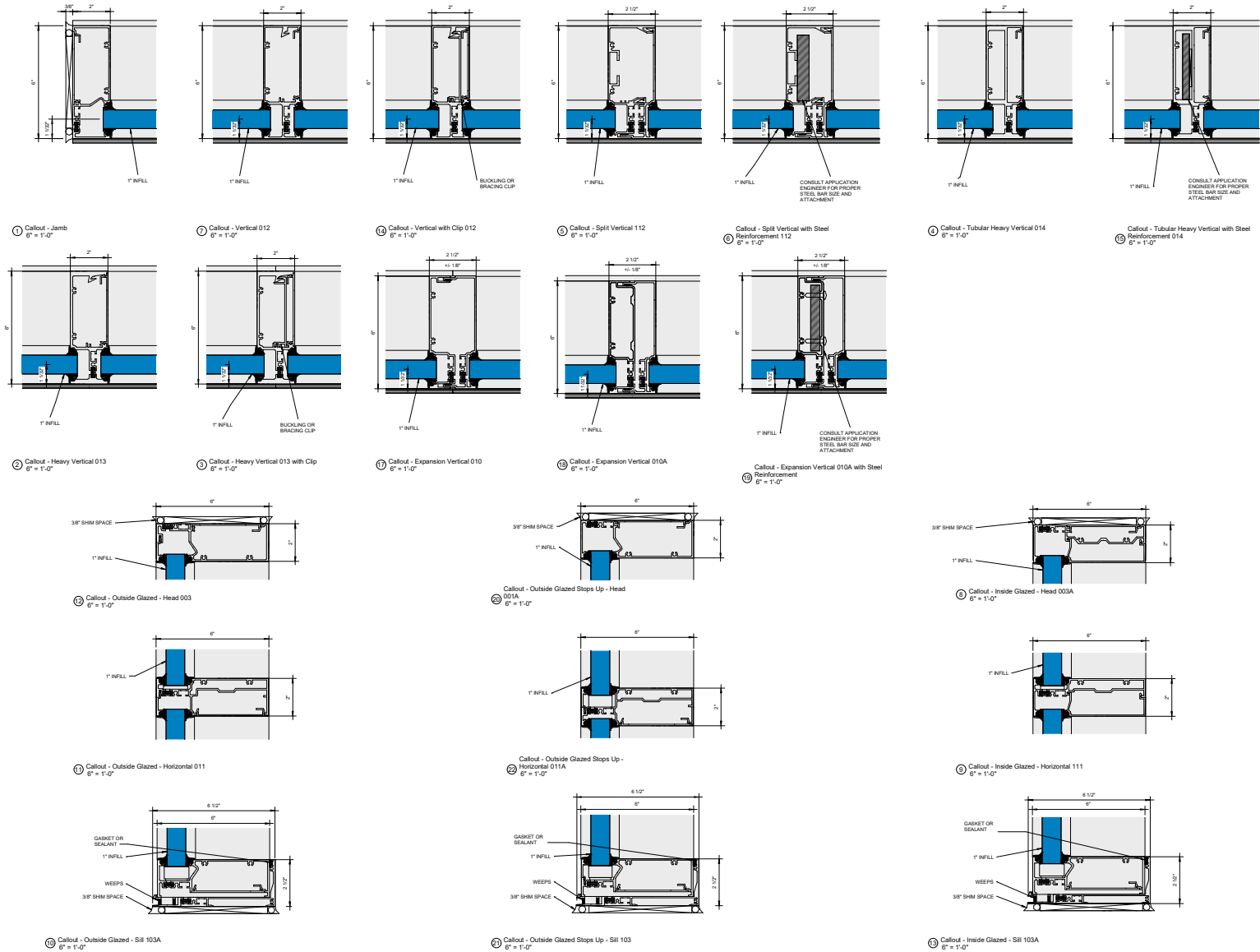


③ Inside Glazed  
1 1/2" = 1'-0"



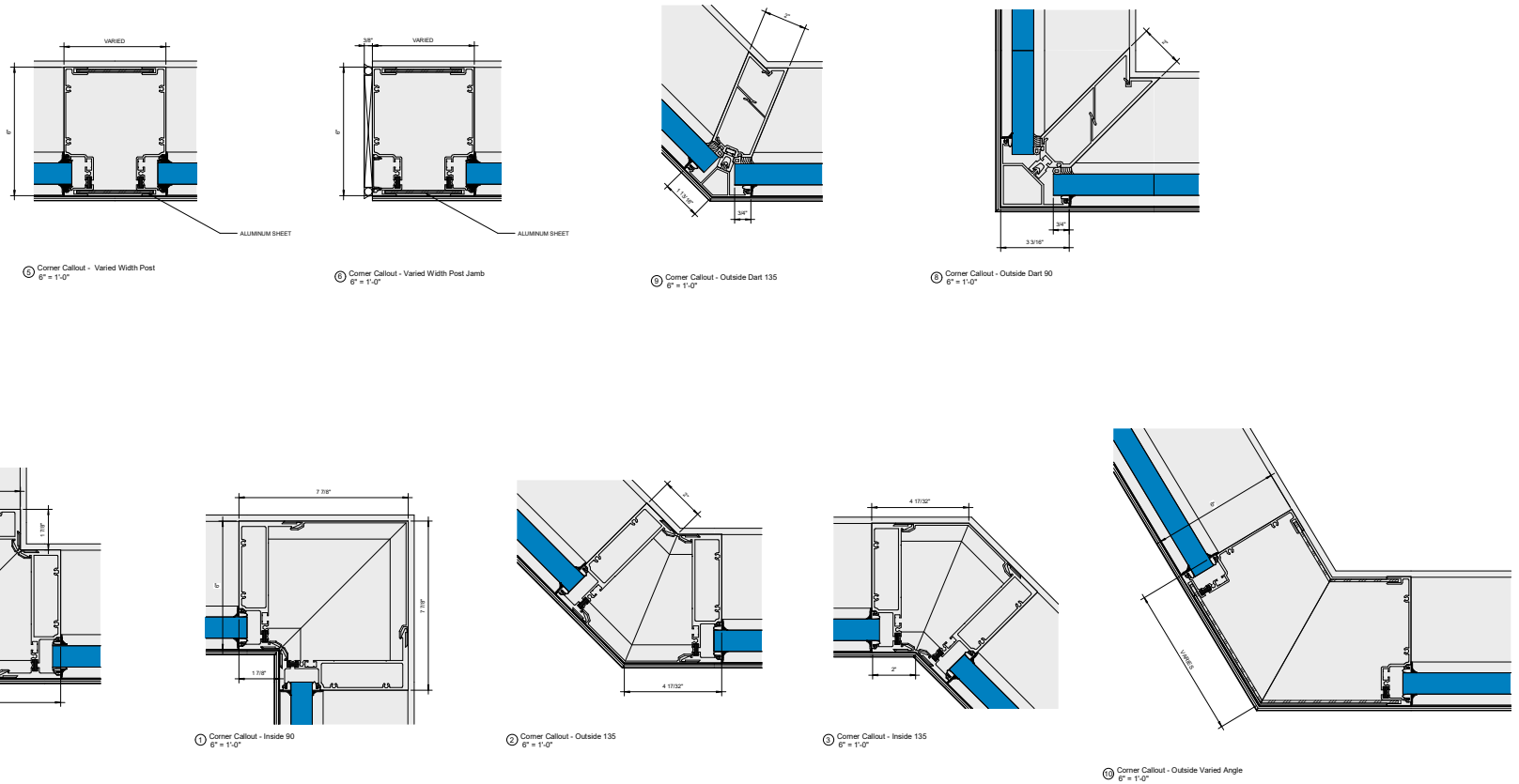
### KAWNEER AN ARCONIC COMPANY

555 Guthridge Ct.  
Technology Park/Atlanta  
Norcross, GA 30092 USA  
Tel: +1 770 449 5555



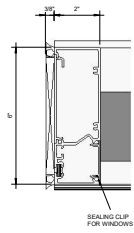
**KAWNEER AN ARCONIC COMPANY**

555 Guthridge Ct.  
Technology Park/Atlanta  
Norcross, GA 30092 USA  
Tel: +1 770 449 5555

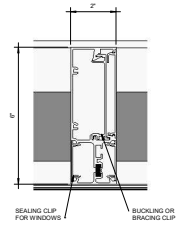


**KAWNEER AN ARCONIC COMPANY**

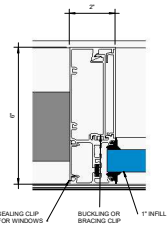
555 Guthridge Ct.  
Technology Park/Atlanta  
Norcross, GA 30092 USA  
Tel: +1 770 449 5555



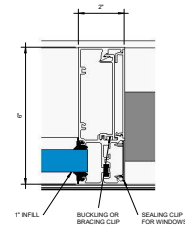
1 Callout - Window Jamb  
6" = 1'-0"



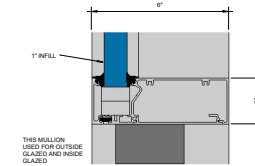
2 Callout - Window Vertical No Pocket  
6" = 1'-0"



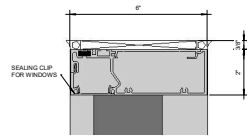
3 Callout - Window Vertical One Pocket Side  
A  
6" = 1'-0"



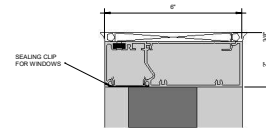
4 Callout - Window Vertical One Pocket Side  
B  
6" = 1'-0"



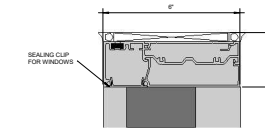
5 Callout - Window Intermediate Horizontal  
Head 001A  
6" = 1'-0"



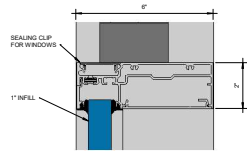
6 Callout - Window Outside Glazed - Head  
003  
6" = 1'-0"



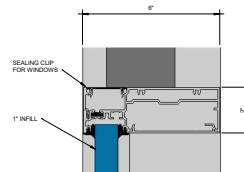
7 Callout - Window Outside Glazed Steps Up -  
Head 001A  
6" = 1'-0"



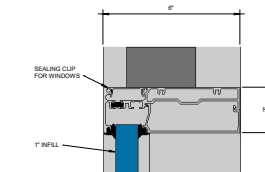
8 Callout - Window Inside Glazed - Head  
003A  
6" = 1'-0"



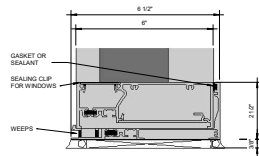
9 Callout - Window Outside Glazed -  
Intermediate Horizontal 011  
6" = 1'-0"



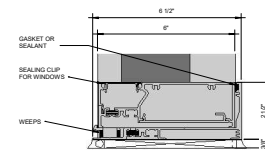
10 Callout - Window Outside Glazed Steps Up -  
Intermediate Horizontal 011A  
6" = 1'-0"



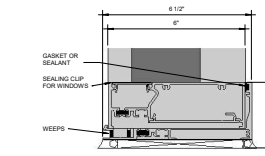
11 Callout - Window Inside Glazed -  
Intermediate Horizontal 111  
6" = 1'-0"



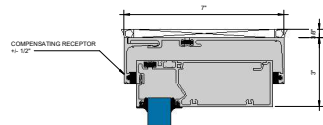
12 Callout - Window Sill 103A - OG  
6" = 1'-0"



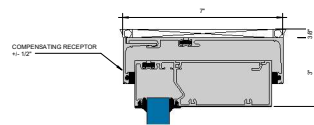
13 Callout - Window Outside Glazed Steps Up -  
Sill 103  
6" = 1'-0"



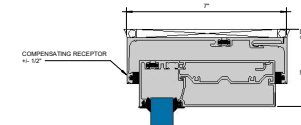
14 Callout - Glassvert Sill 103A - IG  
6" = 1'-0"



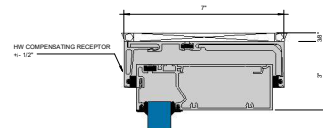
Callout - Outside Glazed Compensating Receptor  
 $\delta^* = 1/2"$



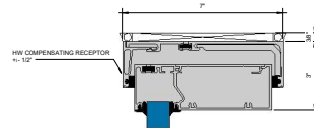
Callout - Outside Glazed Stops Up Compensating Receptor  
 $\delta^* = 1/2"$



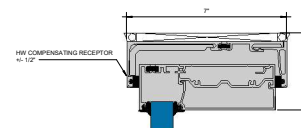
Callout - Inside Glazed Compensating Receptor  
 $\delta^* = 1/2"$



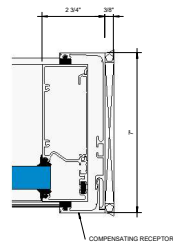
Callout - Outside Glazed HW Compensating Receptor  
 $\delta^* = 1/2"$



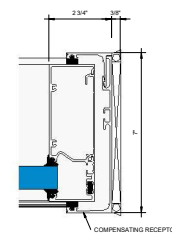
Callout - Outside Glazed Stops Up HW Compensating Receptor  
 $\delta^* = 1/2"$



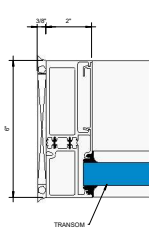
Callout - Inside Glazed HW Compensating Receptor  
 $\delta^* = 1/2"$



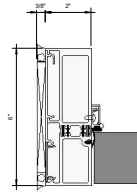
Callout - Outside Glazed Compensating Receptor Jamb  
 $\delta^* = 1/2"$



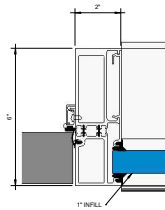
Callout - Inside Glazed Compensating Receptor Jamb  
 $\delta^* = 1/2"$



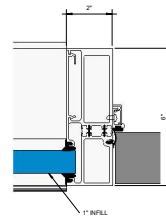
① Callout - Door - Thermal Transom Jamb A  
6" = 1'-0"



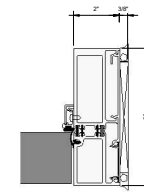
① Callout - Door - Thermal Jamb A  
6" = 1'-0"



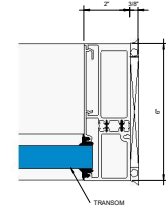
② Callout - Door - Thermal Door Jamb with Pocket A  
6" = 1'-0"



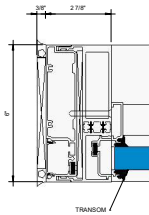
① Callout - Door - Thermal Door Jamb with Pocket B  
6" = 1'-0"



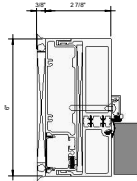
② Callout - Door - Thermal Jamb B  
6" = 1'-0"



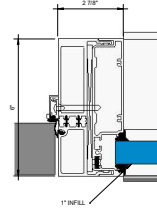
③ Callout - Door - Thermal Transom Jamb B  
6" = 1'-0"



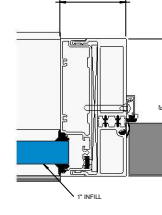
① Callout - Door - Thermal Two Piece Transom Jamb A  
6" = 1'-0"



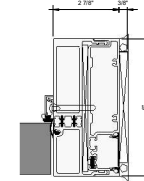
② Callout - Door - Thermal Two Piece Jamb A  
6" = 1'-0"



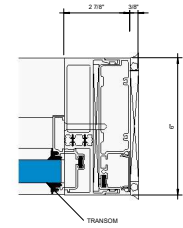
③ Callout - Door - Thermal Two Piece Door Jamb with Pocket A  
6" = 1'-0"



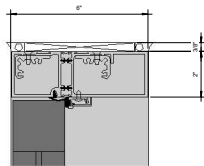
④ Callout - Door - Thermal Two Piece Door Jamb with Pocket B  
6" = 1'-0"



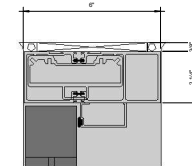
⑤ Callout - Door - Thermal Two Piece Jamb B  
6" = 1'-0"



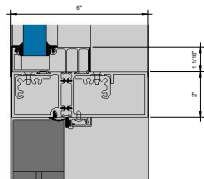
⑥ Callout - Door - Thermal Two Piece Transom Jamb B  
6" = 1'-0"



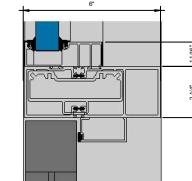
③ Callout - Door - Thermal Head  
6" = 1'-0"



③ Callout - Door - Thermal Head - CoC  
6" = 1'-0"



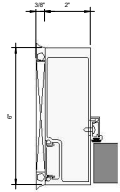
④ Callout - Door - Thermal Transom Head  
6" = 1'-0"



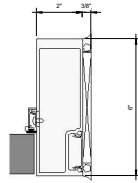
④ Callout - Door - Thermal Transom Head - CoC  
6" = 1'-0"

**KAWNEER AN ARCONIC COMPANY**

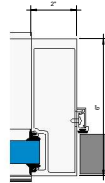
555 Guthridge Ct.  
Technology Park/Atlanta  
Norcross, GA 30092 USA  
Tel: +1 770 449 5555



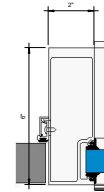
③ Callout - Door - Non-Thermal Jamb Left  
6" = 1'-0"



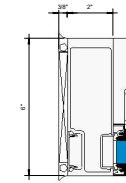
③ Callout - Door - Non-Thermal Jamb Right  
6" = 1'-0"



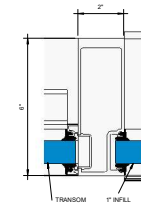
⑦ Callout - Door - Non-Thermal Jamb with  
Pocket Left  
6" = 1'-0"



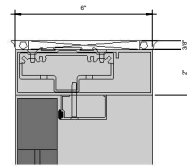
⑦ Callout - Door - Non-Thermal Jamb with  
Pocket Right  
6" = 1'-0"



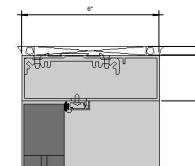
⑧ Callout - Door - Non-Thermal Transom  
Jamb  
6" = 1'-0"



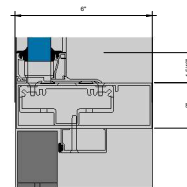
⑩ Callout - Door - Non-Thermal Transom  
Jamb with Pocket  
6" = 1'-0"



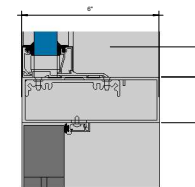
① Callout - Door - Non-Thermal Head - CoC  
6" = 1'-0"



② Callout - Door - Non-Thermal Head  
6" = 1'-0"

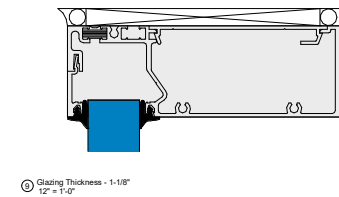
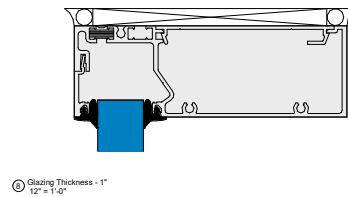
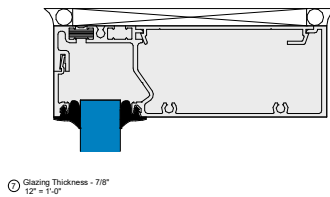
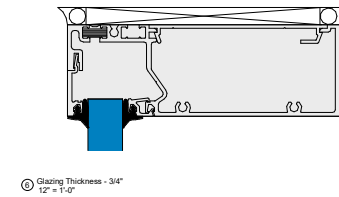
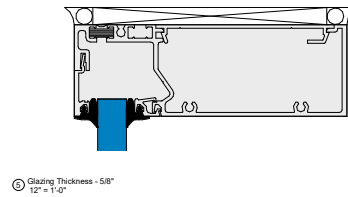
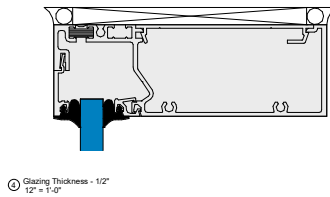
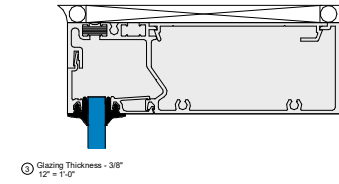
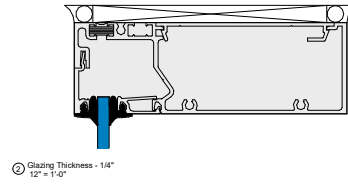
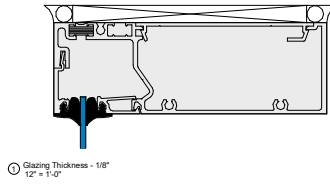


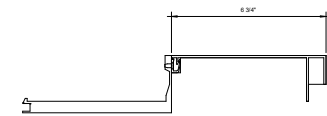
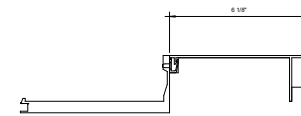
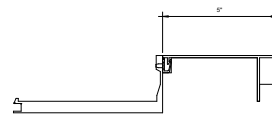
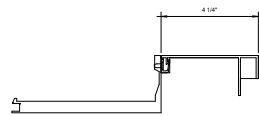
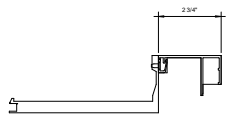
④ Callout - Door - Non-Thermal Transom  
Head - CoC  
6" = 1'-0"



④ Callout - Door - Non-Thermal Transom  
Head  
6" = 1'-0"







① Sill Stool Trims  
6" = 1-1/2"

### KAWNEER AN ARCONIC COMPANY

555 Guthridge Ct.  
Technology Park/Atlanta  
Norcross, GA 30092 USA  
Tel: +1 770 449 5555