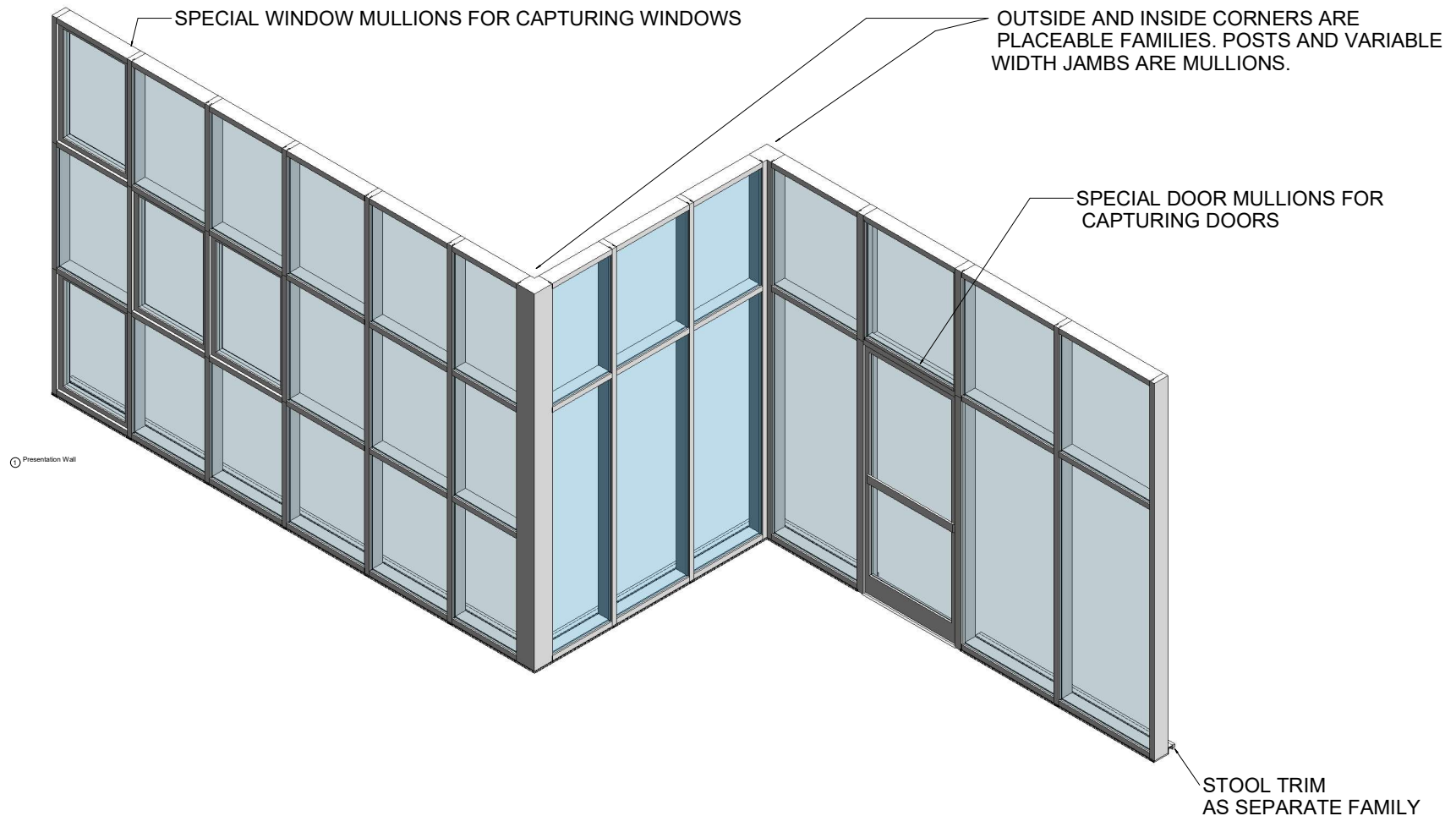


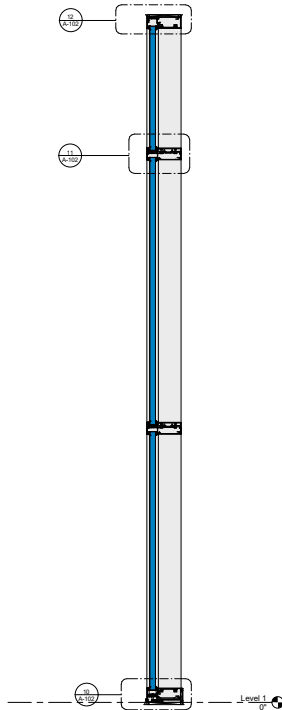
THIS PRODUCT LINE IS THERMALLY BROKEN.



## Plan, Elevations & Section



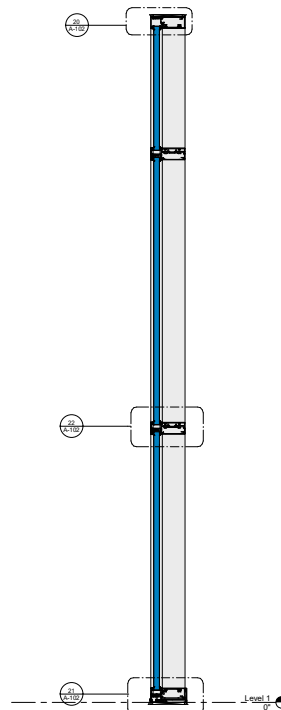
① Basic Wall Example - Outside Glazed  
1" = 1'-0"



② Outside Glazed  
1 1/2" = 1'-0"



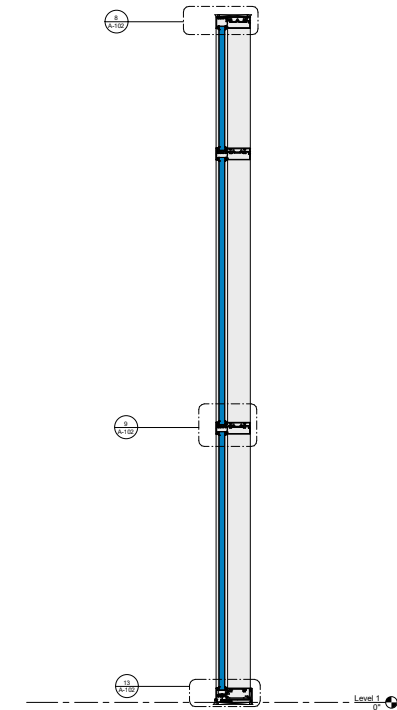
③ Basic Wall Example - Outside Glazed Stops Up  
1" = 1'-0"



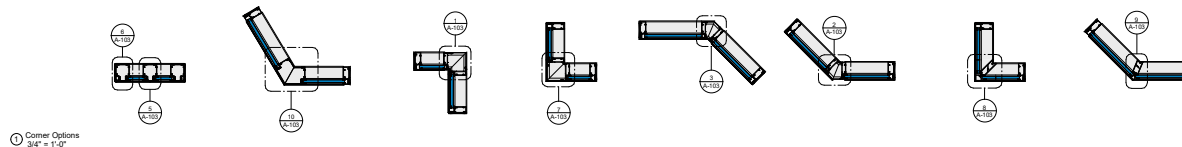
④ Outside Glazed Stops Up  
1 1/2" = 1'-0"



⑤ Basic Wall Example - Inside Glazed  
1" = 1'-0"



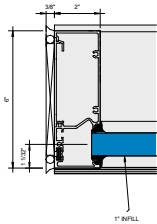
⑥ Inside Glazed  
1 1/2" = 1'-0"



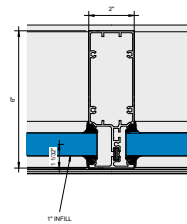
⑦ Corner Options  
3/4" = 1'-0"

### KAWNEER AN ARCONIC COMPANY

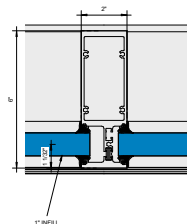
555 Guthridge Ct.  
Technology Park/Atlanta  
Norcross, GA 30092 USA  
Tel: +1 770 449 5555



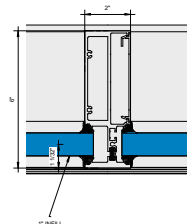
1 Callout - Jamb  
6\"/>



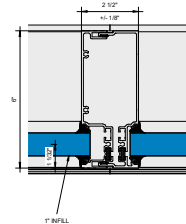
2 Callout - Vertical 005  
6\"/>



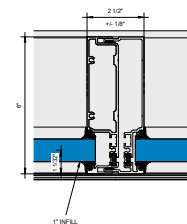
3 Callout - Vertical 105  
6\"/>



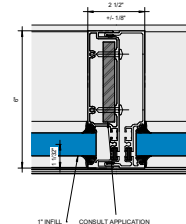
4 Callout - Tubular Heavy Vertical  
6\"/>



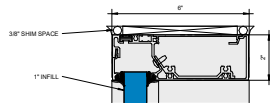
5 Callout - Expansion Vertical 010  
6\"/>



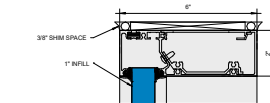
6 Callout - Expansion Vertical 010A  
6\"/>



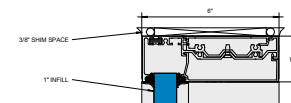
7 Callout - Expansion Vertical 010A with Steel Reinforcement  
6\"/>



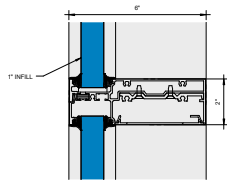
8 Callout - Outside Glazed - Head 003  
6\"/>



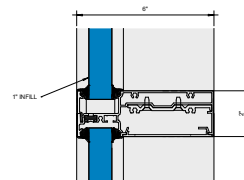
9 Callout - Outside Glazed Stops Up - Head 001A  
6\"/>



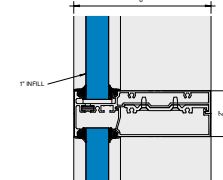
10 Callout - Inside Glazed - Head 003A  
6\"/>



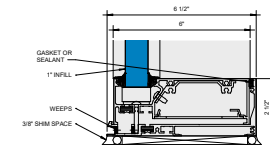
11 Callout - Outside Glazed - Horizontal 011  
6\"/>



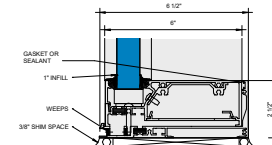
12 Callout - Outside Glazed Stops Up - Horizontal 011A  
6\"/>



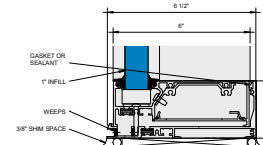
13 Callout - Inside Glazed - Horizontal 111  
6\"/>



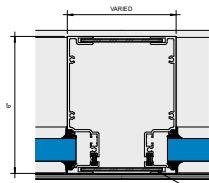
14 Callout - Outside Glazed - Sill 103A  
6\"/>



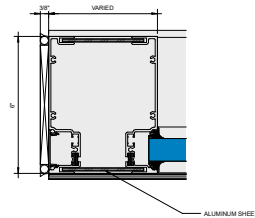
15 Callout - Outside Glazed Stops Up - Sill 103  
6\"/>



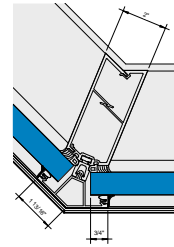
16 Callout - Inside Glazed - Sill 103A  
6\"/>



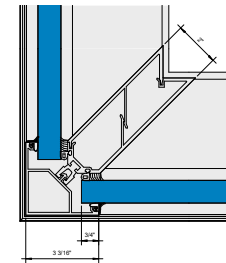
① Corner Callout - Varied Width Post  
6" = 1'-0"



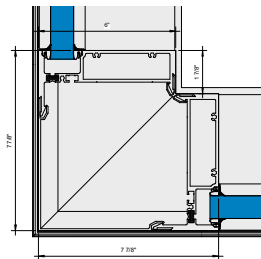
② Corner Callout - Varied Width Post Jamb  
6" = 1'-0"



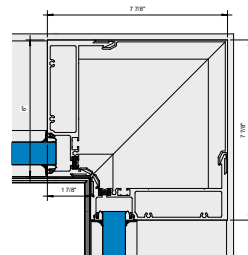
③ Corner Callout - Outside Dart 135  
6" = 1'-0"



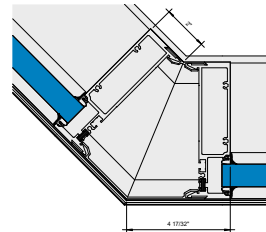
④ Corner Callout - Outside Dart 90  
6" = 1'-0"



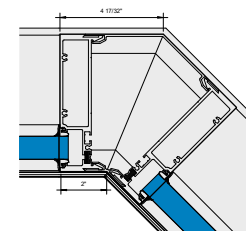
⑤ Corner Callout - Outside 90  
6" = 1'-0"



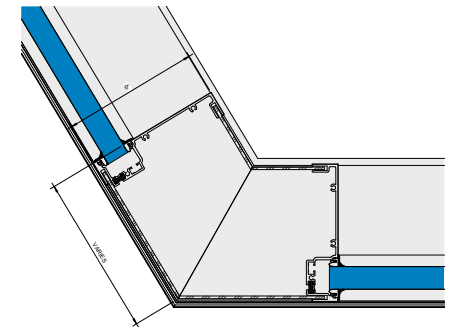
⑥ Corner Callout - Inside 90  
6" = 1'-0"



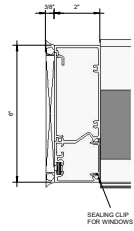
⑦ Corner Callout - Outside 135  
6" = 1'-0"



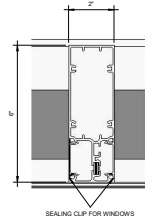
⑧ Corner Callout - Inside 135  
6" = 1'-0"



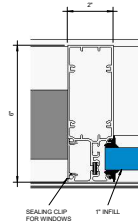
⑨ Corner Callout - Outside Varied Angle  
6" = 1'-0"



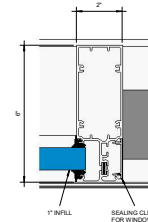
1 Callout - Window Jamb  
6" = 1'-0"



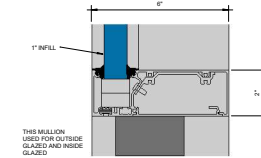
2 Callout - Window Vertical No Pocket  
6" = 1'-0"



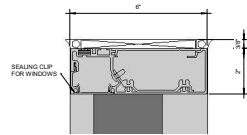
3 Callout - Window Vertical One Pocket Side  
6" = 1'-0"



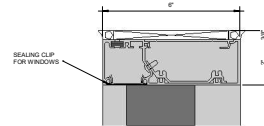
4 Callout - Window Vertical One Pocket Side  
6" = 1'-0"



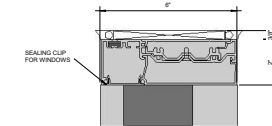
5 Callout - Window Intermediate Horizontal  
Head 001A  
6" = 1'-0"



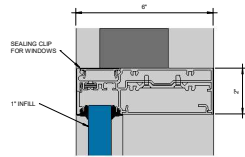
6 Callout - Window Outside Glazed - Head  
003  
6" = 1'-0"



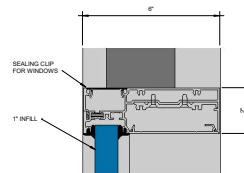
7 Callout - Window Outside Glazed Stops Up -  
Head 001A  
6" = 1'-0"



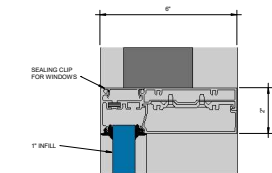
8 Callout - Window Inside Glazed - Head  
003A  
6" = 1'-0"



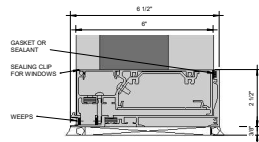
9 Callout - Window Outside Glazed -  
Intermediate Horizontal 011  
6" = 1'-0"



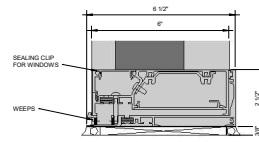
10 Callout - Window Outside Glazed Stops Up -  
Intermediate Horizontal 011A  
6" = 1'-0"



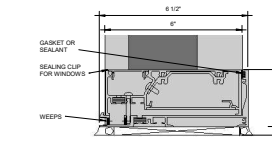
11 Callout - Window Inside Glazed -  
Intermediate Horizontal 111  
6" = 1'-0"



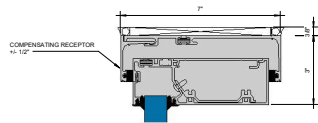
12 Callout - Window Sill 103A - OG  
6" = 1'-0"



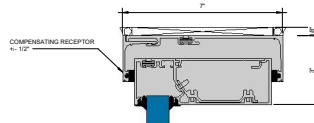
13 Callout - Window Outside Glazed Stops Up -  
Sill 103  
6" = 1'-0"



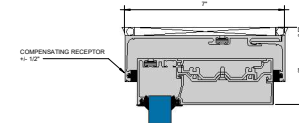
14 Callout - Window Sill 103A - IG  
6" = 1'-0"



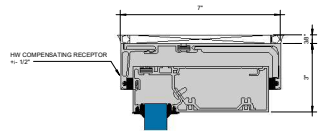
Callout - Outside Glazed Compensating Receptor  
 $\delta^* = 1'-0"$



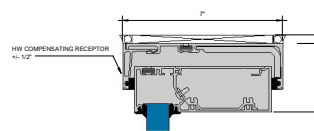
Callout - Outside Glazed Stops Up Compensating Receptor  
 $\delta^* = 1'-0"$



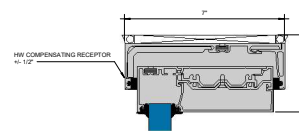
Callout - Inside Glazed Compensating Receptor  
 $\delta^* = 1'-0"$



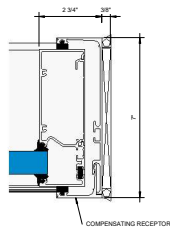
Callout - Outside Glazed HW Compensating Receptor  
 $\delta^* = 1'-0"$



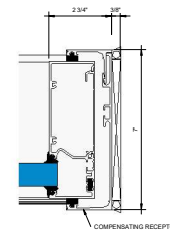
Callout - Outside Glazed Stops Up HW Compensating Receptor  
 $\delta^* = 1'-0"$



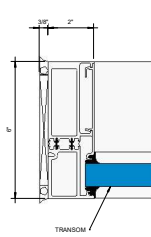
Callout - Inside Glazed HW Compensating Receptor  
 $\delta^* = 1'-0"$



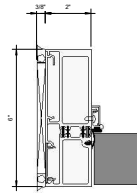
Callout - Outside Glazed Compensating Receptor Jamb  
 $\delta^* = 1'-0"$



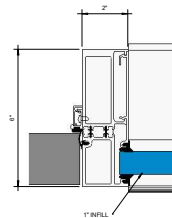
Callout - Inside Glazed Compensating Receptor Jamb  
 $\delta^* = 1'-0"$



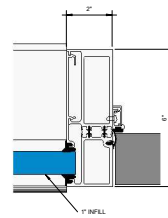
1 Callout - Door - Thermal Transom Jamb A  
6" = 1'-0"



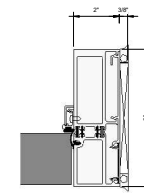
1 Callout - Door - Thermal Jamb A  
6" = 1'-0"



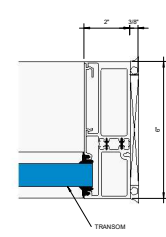
2 Callout - Door - Thermal Door Jamb with Pocket A  
6" = 1'-0"



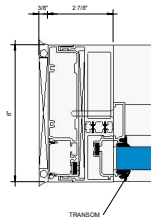
1 Callout - Door - Thermal Door Jamb with Pocket B  
6" = 1'-0"



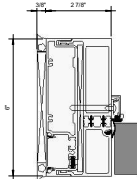
1 Callout - Door - Thermal Jamb B  
6" = 1'-0"



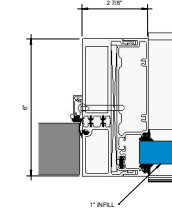
12 Callout - Door - Thermal Transom Jamb B  
6" = 1'-0"



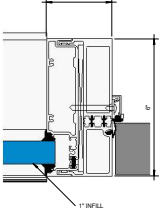
1 Callout - Door - Thermal Two Piece Transom Jamb A  
6" = 1'-0"



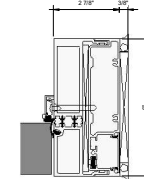
3 Callout - Door - Thermal Two Piece Jamb A  
6" = 1'-0"



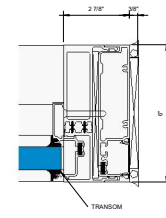
3 Callout - Door - Thermal Two Piece Door Jamb with Pocket A  
6" = 1'-0"



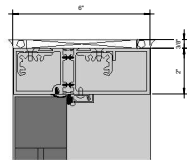
3 Callout - Door - Thermal Two Piece Door Jamb with Pocket B  
6" = 1'-0"



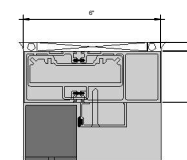
1 Callout - Door - Thermal Expansion Jamb B  
6" = 1'-0"



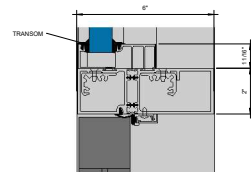
12 Callout - Door - Thermal Two Piece Transom Jamb B  
6" = 1'-0"



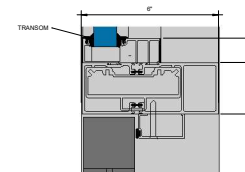
13 Callout - Door - Thermal Header  
6" = 1'-0"



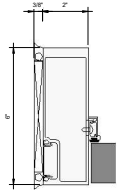
13 Callout - Door - Thermal Header - CoC  
6" = 1'-0"



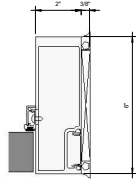
14 Callout - Door - Thermal Transom Header  
6" = 1'-0"



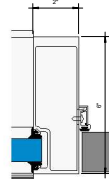
14 Callout - Door - Thermal Transom Header - CoC  
6" = 1'-0"



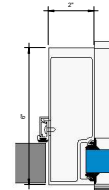
6 Callout - Door - Non-Thermal Jamb Left  
6' = 1'-0"



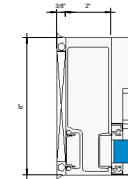
6 Callout - Door - Non-Thermal Jamb Right  
6' = 1'-0"



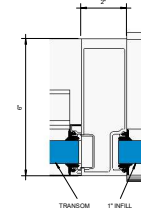
7 Callout - Door - Non-Thermal Jamb with Pocket Left  
6' = 1'-0"



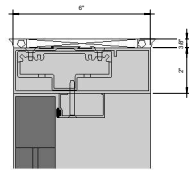
8 Callout - Door - Non-Thermal Jamb with Pocket Right  
6' = 1'-0"



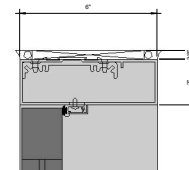
9 Callout - Door - Non-Thermal Transom Jamb  
6' = 1'-0"



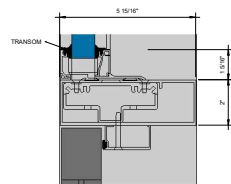
10 Callout - Door - Non-Thermal Transom Jamb with Pocket  
6' = 1'-0"



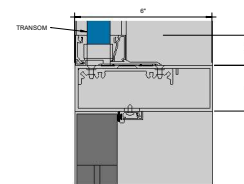
11 Callout - Door - Non-Thermal Head - CoC  
6' = 1'-0"



12 Callout - Door - Non-Thermal Head  
6' = 1'-0"

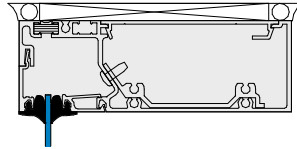


13 Callout - Door - Non-Thermal Transom Header - CoC  
6' = 1'-0"

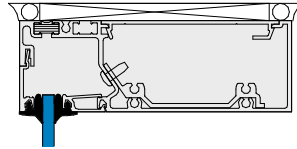


14 Callout - Door - Non-Thermal Transom Header  
6' = 1'-0"

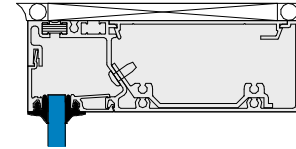




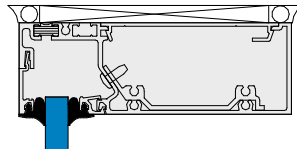
① Glazing Thickness - 1/8"  
12" x 1'-0"



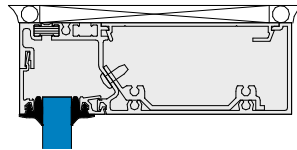
② Glazing Thickness - 1/4"  
12" x 1'-0"



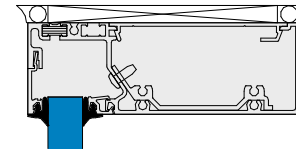
③ Glazing Thickness - 3/8"  
12" x 1'-0"



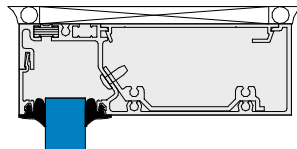
④ Glazing Thickness - 1/2"  
12" x 1'-0"



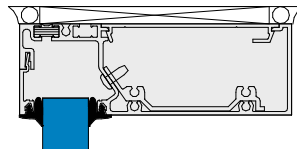
⑤ Glazing Thickness - 5/8"  
12" x 1'-0"



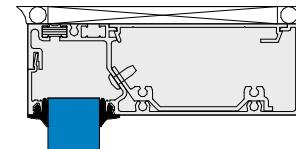
⑥ Glazing Thickness - 3/4"  
12" x 1'-0"



⑦ Glazing Thickness - 7/8"  
12" x 1'-0"



⑧ Glazing Thickness - 1"  
12" x 1'-0"



⑨ Glazing Thickness - 1-1/8"  
12" x 1'-0"