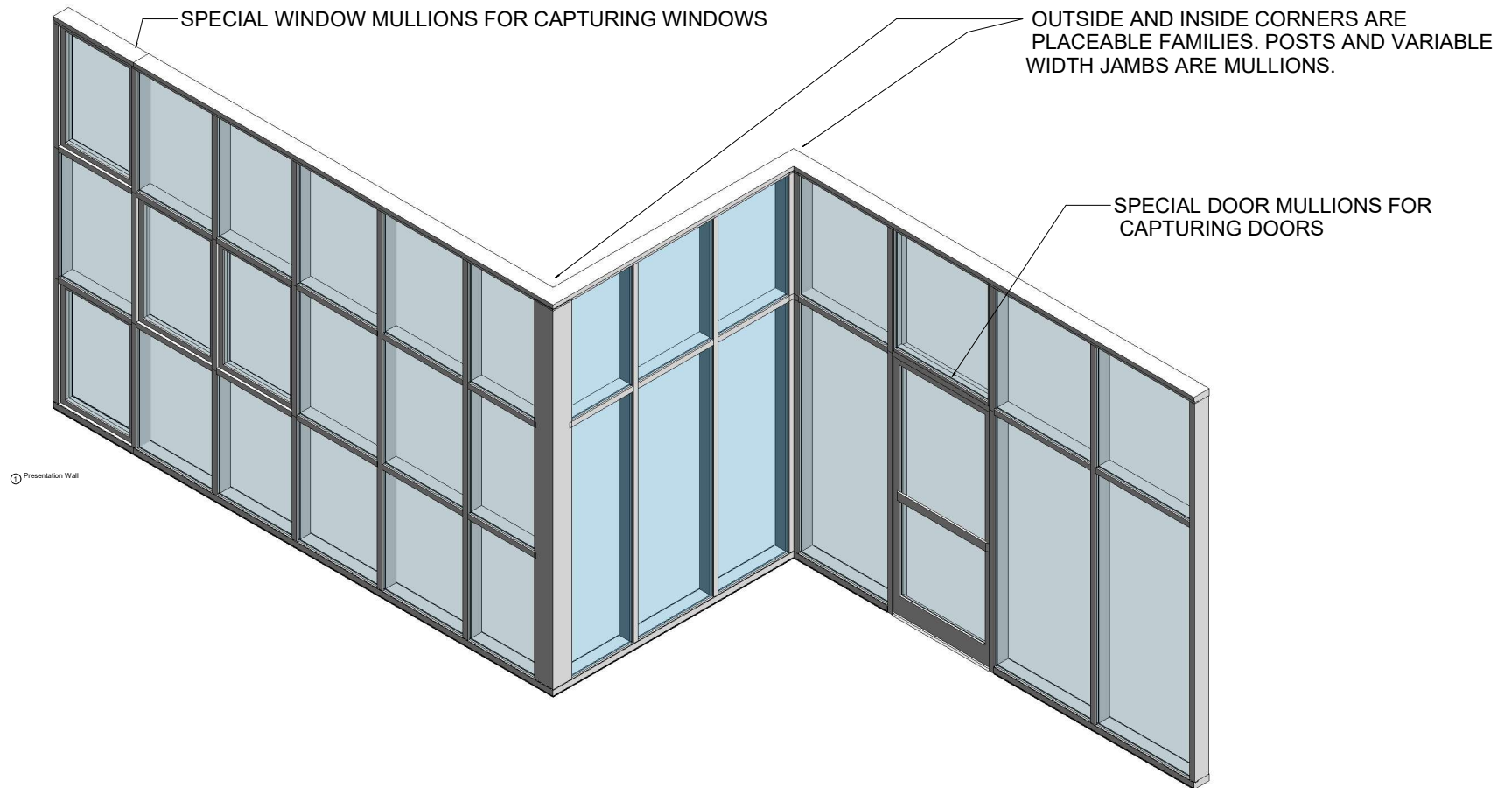


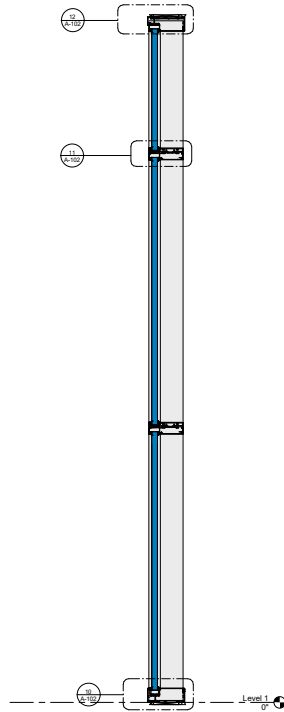
THIS PRODUCT LINE IS THERMALLY BROKEN.



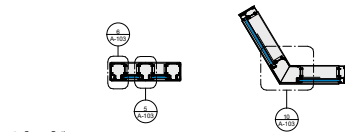
Plan, Elevations & Section



① Basic Wall Example - Outside Glazed
1" = 1'-0"

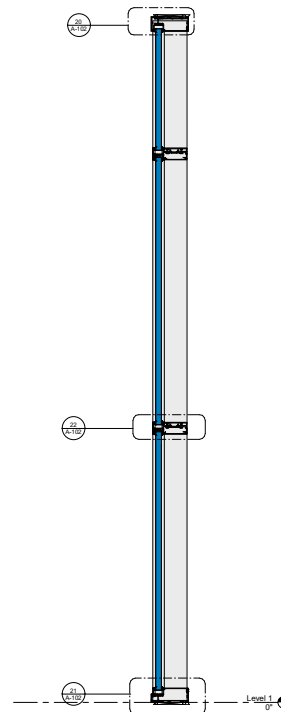


② Outside Glazed
1 1/2" = 1'-0"

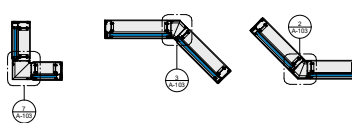


③ Corner Options
3/4" = 1'-0"

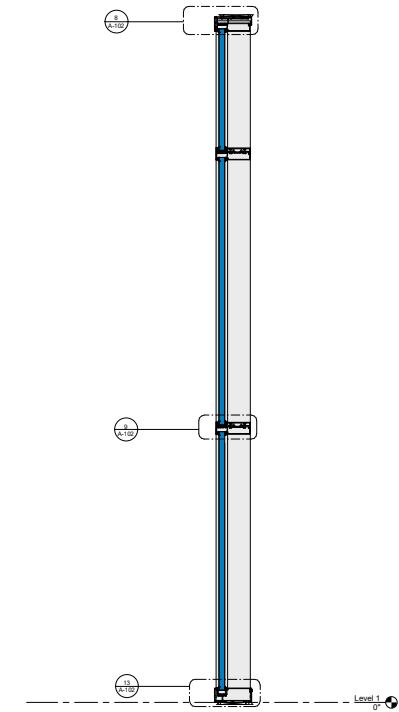
④ Basic Wall Example - Outside Glazed Stops
Up
1" = 1'-0"



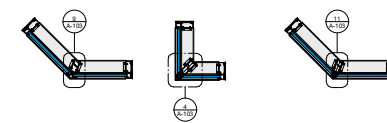
④ Outside Glazed Stops Up
1 1/2" = 1'-0"



⑤ Basic Wall Example - Inside Glazed
1" = 1'-0"

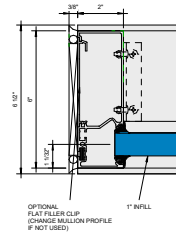


⑤ Inside Glazed
1 1/2" = 1'-0"

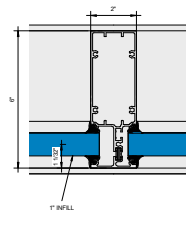


KAWNEER AN ARCONIC COMPANY

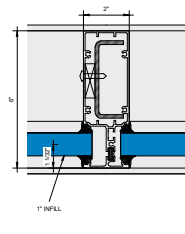
555 Guthridge Ct.
Technology Park/Atlanta
Norcross, GA 30092 USA
Tel: + 1 770 449 5555



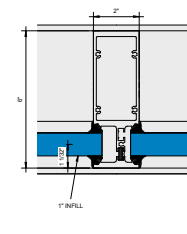
1 Callout - Jamb
6" = 1'-0"



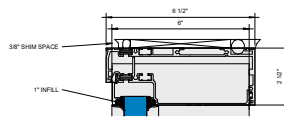
7 Callout - Vertical 005
6" = 1'-0"



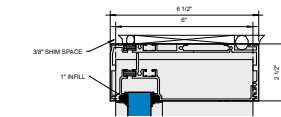
12 Callout - Vertical with Steel 005
6" = 1'-0"



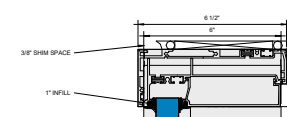
2 Callout - Vertical Heavy 105
6" = 1'-0"



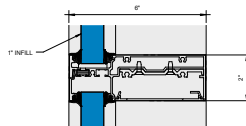
13 Callout - Outside Glazed - Head 006 OG
6" = 1'-0"



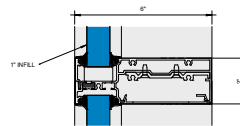
20 Callout - Outside Glazed Stops Up - Head 100 EQ
6" = 1'-0"



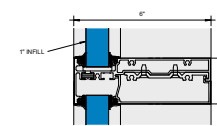
9 Callout - Inside Glazed - Head 006 IG
6" = 1'-0"



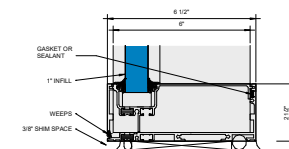
11 Callout - Outside Glazed - Horizontal 011
6" = 1'-0"



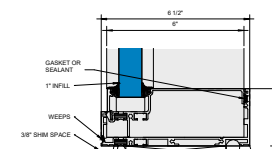
22 Callout - Outside Glazed Stops Up - Horizontal 011A
6" = 1'-0"



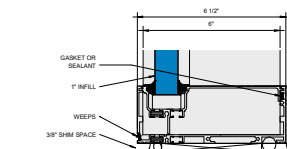
8 Callout - Inside Glazed - Horizontal 111
6" = 1'-0"



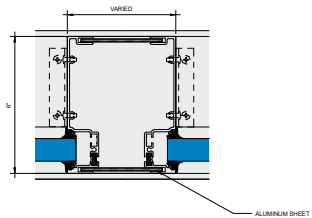
16 Callout - Outside Glazed - Sill 106 EQ OG
6" = 1'-0"



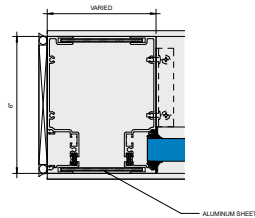
23 Callout - Outside Glazed Stops Up - Sill 006
6" = 1'-0"



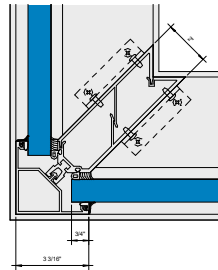
10 Callout - Inside Glazed - Sill 106 EQ IG
6" = 1'-0"



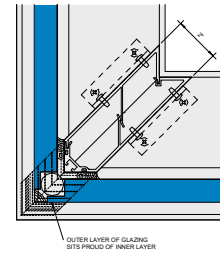
1 Corner Callout - Varied Width Post
6" = 1'-0"



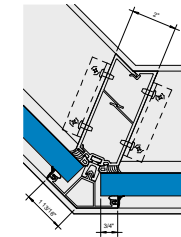
2 Corner Callout - Varied Width Post Jamb
6" = 1'-0"



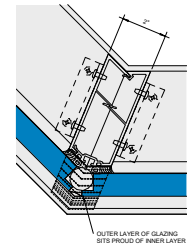
3 Corner Callout - Outside Dart 90
6" = 1'-0"



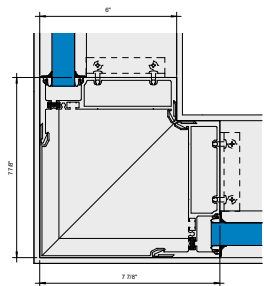
4 Corner Callout - Outside SSG Dart 90
6" = 1'-0"



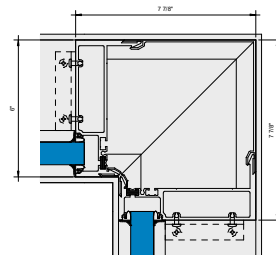
5 Corner Callout - Outside Dart 135
6" = 1'-0"



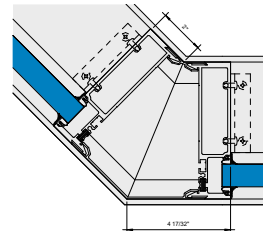
6 Corner Callout - Outside SSG Dart 135
6" = 1'-0"



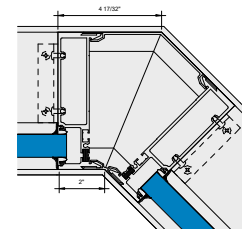
7 Corner Callout - Outside 90
6" = 1'-0"



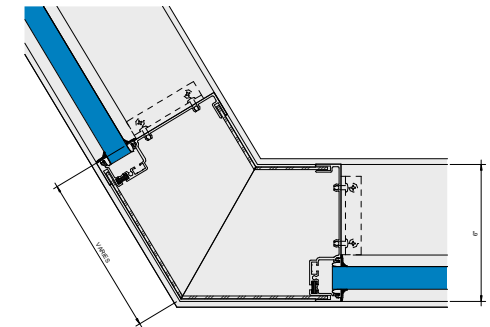
8 Corner Callout - Inside 90
6" = 1'-0"



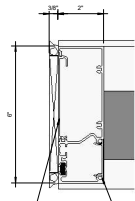
9 Corner Callout - Outside 135
6" = 1'-0"



10 Corner Callout - Inside 135
6" = 1'-0"



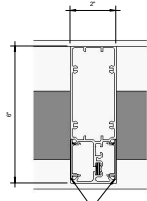
11 Corner Callout - Outside Varied Angle
6" = 1'-0"



OPTIONAL
FLAT FILLER CLIP
(CHANGE MULLION PROFILE
IF NOT USED)

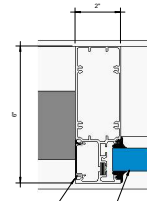
SEALING CLIP
FOR WINDOWS

1 Callout - Window Jamb
6" = 1'-0"



SEALING CLIP FOR WINDOWS

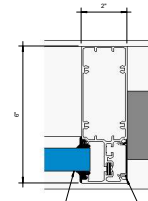
2 Callout - Window Vertical No Pocket
6" = 1'-0"



SEALING CLIP FOR WINDOWS

1" INFILL

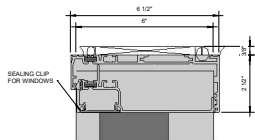
3 Callout - Window Vertical One Pocket Side
6" = 1'-0"



SEALING CLIP FOR WINDOWS

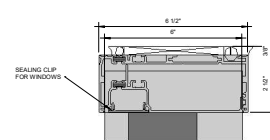
1" INFILL

4 Callout - Window Vertical One Pocket Side
6" = 1'-0"



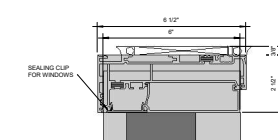
SEALING CLIP FOR WINDOWS

5 Callout - Window Outside Glazed - Head
006 OG
6" = 1'-0"



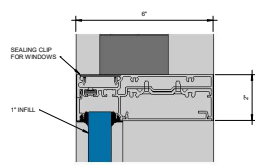
SEALING CLIP FOR WINDOWS

6 Callout - Window Outside Glazed Steps Up -
Head 006 EQ
6" = 1'-0"



SEALING CLIP FOR WINDOWS

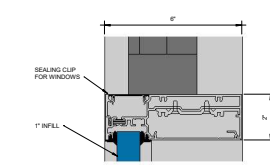
7 Callout - Window Inside Glazed - Head 006
IG
6" = 1'-0"



SEALING CLIP FOR WINDOWS

1" INFILL

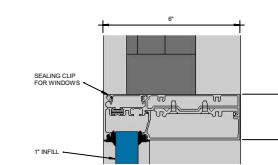
8 Callout - Window Outside Glazed -
Intermediate Horizontal 011 Vent Above
6" = 1'-0"



SEALING CLIP FOR WINDOWS

1" INFILL

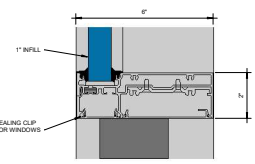
9 Callout - Window Outside Glazed Steps Up -
Intermediate Horizontal 011A Vent Above
6" = 1'-0"



SEALING CLIP FOR WINDOWS

1" INFILL

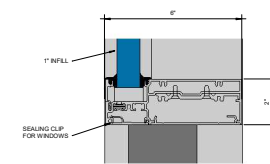
10 Callout - Window Inside Glazed -
Intermediate Horizontal 111 Vent Above
6" = 1'-0"



SEALING CLIP FOR WINDOWS

1" INFILL

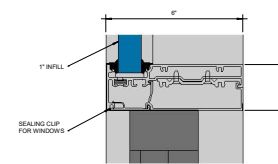
11 Callout - Window Outside Glazed -
Intermediate Horizontal 011 Vent Below
6" = 1'-0"



SEALING CLIP FOR WINDOWS

1" INFILL

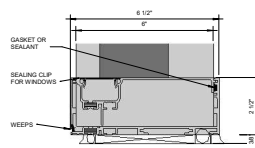
12 Callout - Window Outside Glazed Steps Up -
Intermediate Horizontal 011A Vent Below
6" = 1'-0"



SEALING CLIP FOR WINDOWS

1" INFILL

13 Callout - Window Inside Glazed -
Intermediate Horizontal 111 Vent Below
6" = 1'-0"

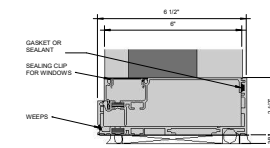


GASKET OR SEALANT

SEALING CLIP FOR WINDOWS

WEEPS

14 Callout - Window SII 006 - EQ OG
6" = 1'-0"

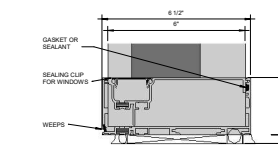


GASKET OR SEALANT

SEALING CLIP FOR WINDOWS

WEEPS

15 Callout - Window Outside Glazed Steps Up -
SII 006 LINEQ
6" = 1'-0"



GASKET OR SEALANT

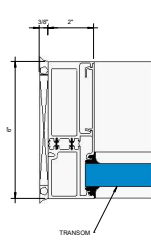
SEALING CLIP FOR WINDOWS

WEEPS

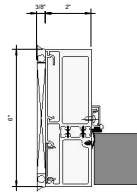
16 Callout - Window SII 006 - EQ IG
6" = 1'-0"

KAWNEER AN ARCONIC COMPANY

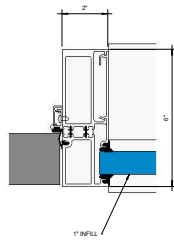
555 Guthridge Ct.
Technology Park/Atlanta
Norcross, GA 30092 USA
Tel: + 1 770 449 5555



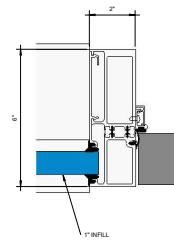
① Callout - Door - Thermal Transom Jamb A
6" = 1'-0"



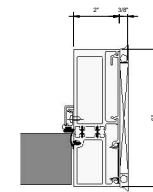
② Callout - Door - Thermal Jamb A
6" = 1'-0"



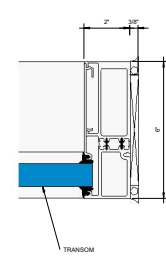
③ Callout - Door - Thermal Door Jamb with Pocket A
6" = 1'-0"



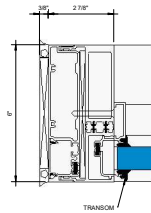
④ Callout - Door - Thermal Door Jamb with Pocket B
6" = 1'-0"



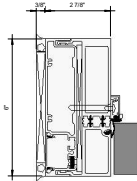
⑤ Callout - Door - Thermal Jamb B
6" = 1'-0"



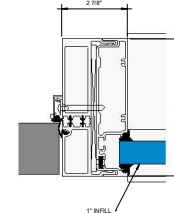
⑥ Callout - Door - Thermal Transom Jamb B
6" = 1'-0"



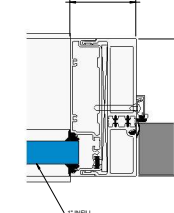
⑦ Callout - Door - Thermal Two Piece Transom Jamb A
6" = 1'-0"



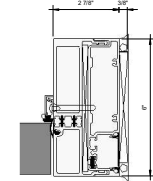
⑧ Callout - Door - Thermal Two Piece Jamb A
6" = 1'-0"



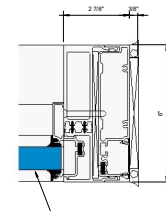
⑨ Callout - Door - Thermal Two Piece Door Jamb with Pocket A
6" = 1'-0"



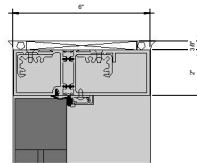
⑩ Callout - Door - Thermal Two Piece Door Jamb with Pocket B
6" = 1'-0"



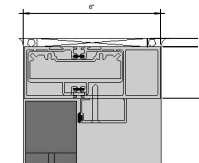
⑪ Callout - Door - Thermal Two Piece Jamb B
6" = 1'-0"



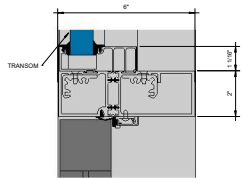
⑫ Callout - Door - Thermal Two Piece Transom Jamb B
6" = 1'-0"



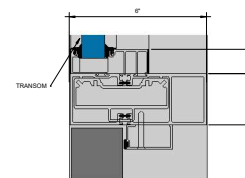
⑬ Callout - Door - Thermal Head
6" = 1'-0"



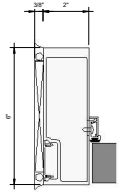
⑭ Callout - Door - Thermal Head - CoC
6" = 1'-0"



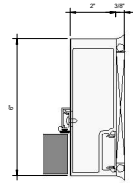
⑮ Callout - Door - Thermal Transom Head
6" = 1'-0"



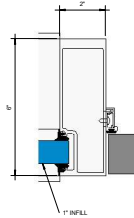
⑯ Callout - Door - Thermal Transom Head - CoC
6" = 1'-0"



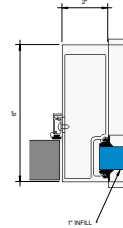
Callout - Door - Non-Thermal Jamb Left
6" = 1'-0"



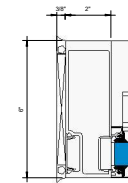
Callout - Door - Non-Thermal Jamb Right
6" = 1'-0"



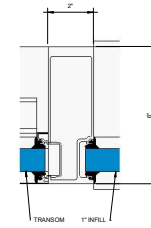
Callout - Door - Non-Thermal Jamb with
Pocket Left
6" = 1'-0"



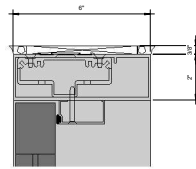
Callout - Door - Non-Thermal Jamb with
Pocket Right
6" = 1'-0"



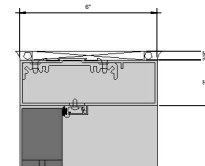
Callout - Door - Non-Thermal Transom
Jamb
6" = 1'-0"



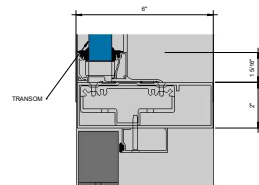
Callout - Door - Non-Thermal Transom
Jamb with Pocket Left
6" = 1'-0"



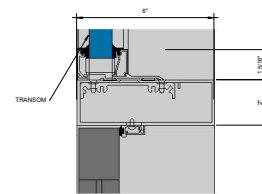
Callout - Door - Non-Thermal Head - CoC
6" = 1'-0"



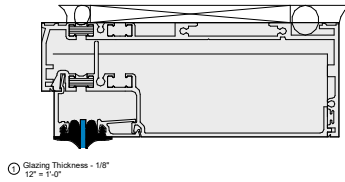
Callout - Door - Non-Thermal Header -
T-Bar
6" = 1'-0"



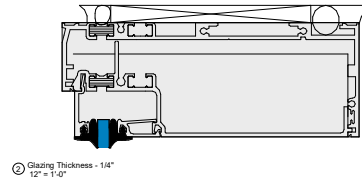
Callout - Door - Non-Thermal Transom
Head - CoC
6" = 1'-0"



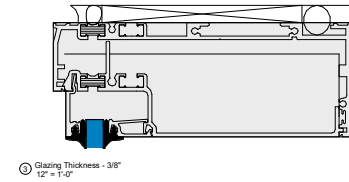
Callout - Door - Non-Thermal Transom
Header - T-Bar
6" = 1'-0"



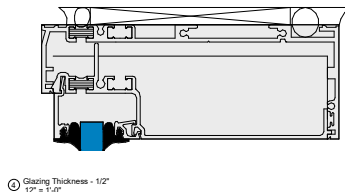
① Glazing Thickness - 1/8"
12" = 1'-0"



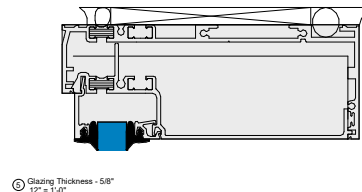
② Glazing Thickness - 1/4"
12" = 1'-0"



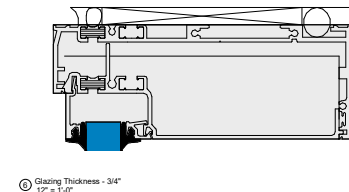
③ Glazing Thickness - 3/8"
12" = 1'-0"



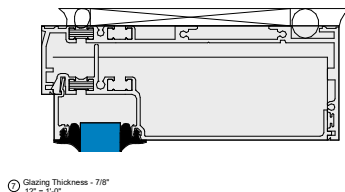
④ Glazing Thickness - 1/2"
12" = 1'-0"



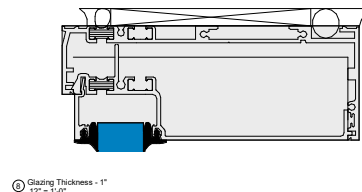
⑤ Glazing Thickness - 5/8"
12" = 1'-0"



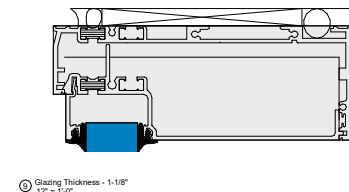
⑥ Glazing Thickness - 3/4"
12" = 1'-0"



⑦ Glazing Thickness - 7/8"
12" = 1'-0"



⑧ Glazing Thickness - 1"
12" = 1'-0"



⑨ Glazing Thickness - 1-1/8"
12" = 1'-0"