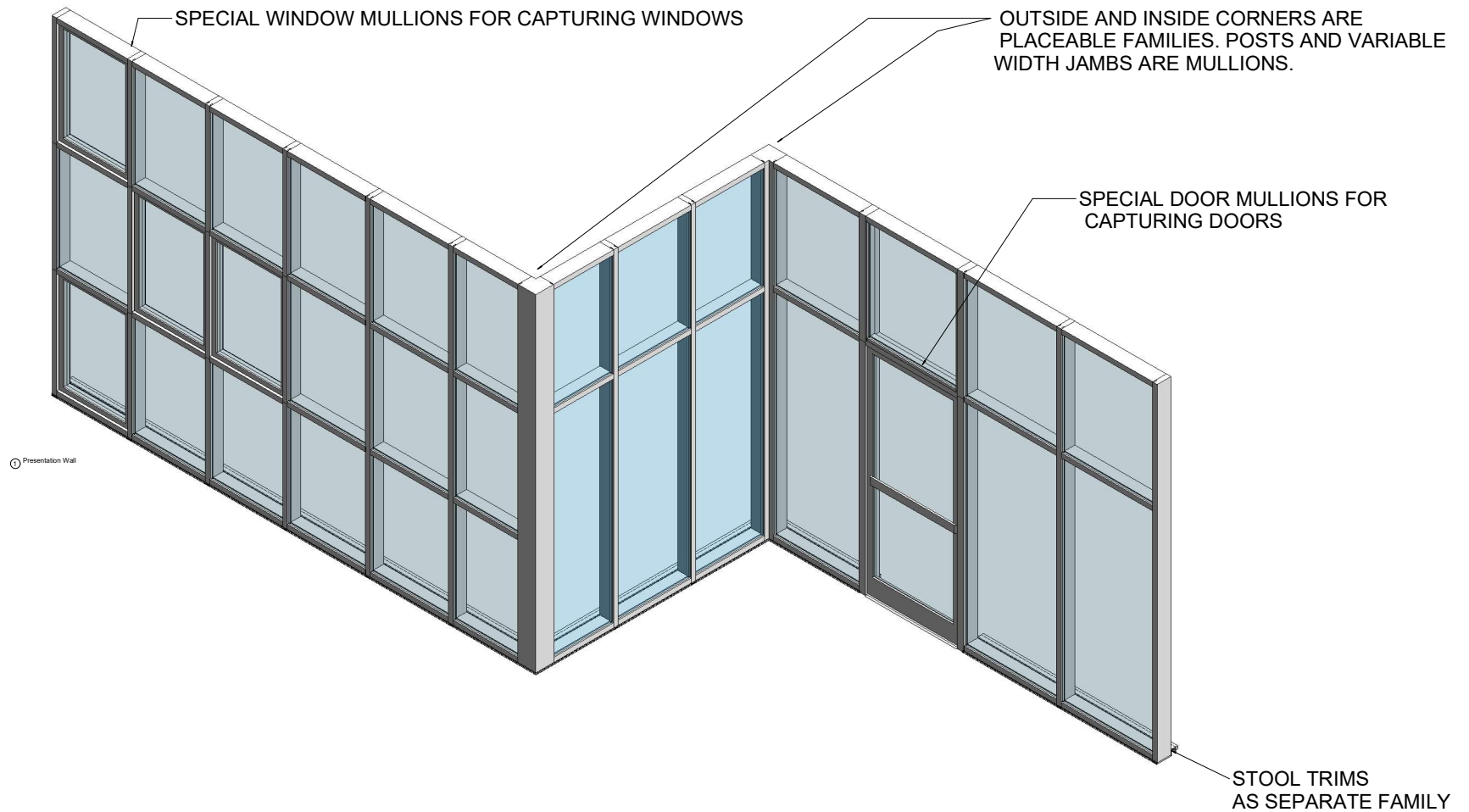


THIS PRODUCT LINE IS THERMALLY BROKEN.



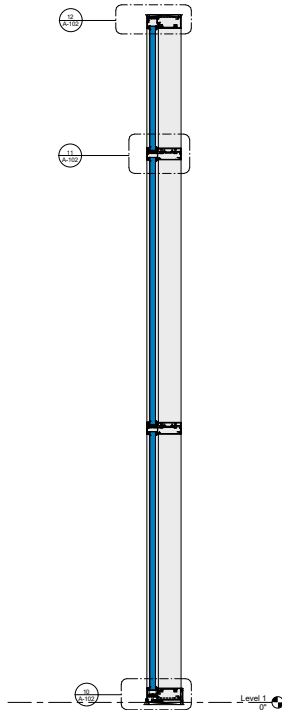
KAWNEER AN ARCONIC COMPANY

555 Guthridge Ct.
Technology Park/Atlanta
Norcross, GA 30092 USA
Tel: +1 770 449 5555

Plan, Elevations & Section

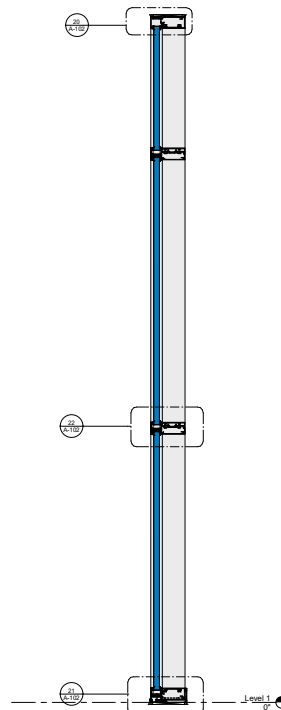


③ Basic Wall Example - Outside Glazed
1" = 1'-0"



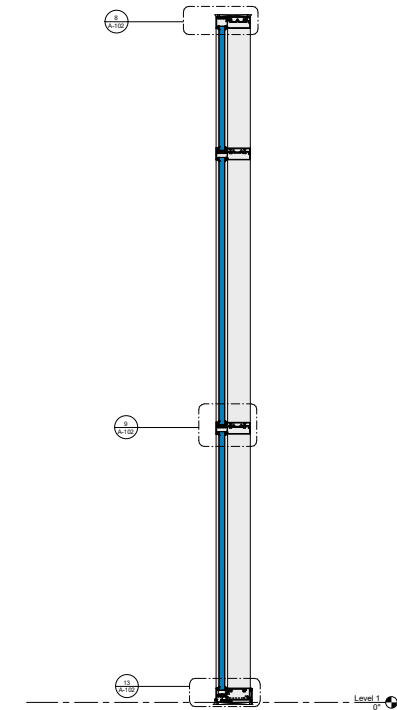
③ Outside Glazed
1 1/2" = 1'-0"

③ Basic Wall Example - Outside Glazed Stops
Up
1" = 1'-0"

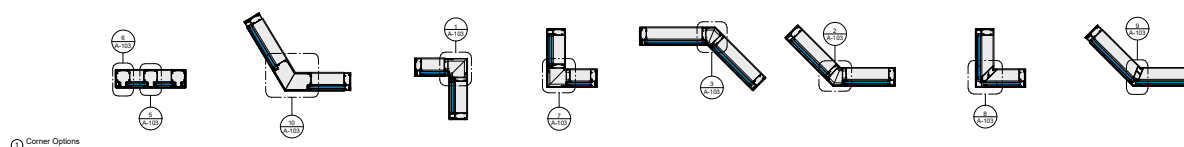


④ Outside Glazed Stops Up
1 1/2" = 1'-0"

③ Basic Wall Example - Inside Glazed
1" = 1'-0"



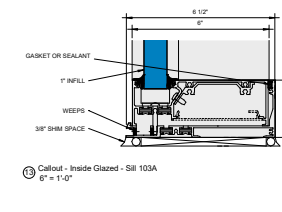
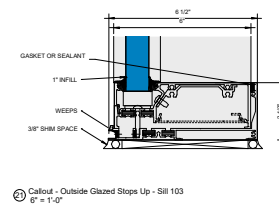
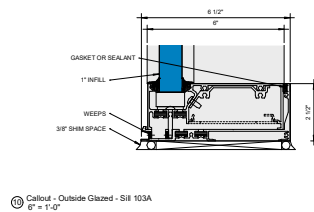
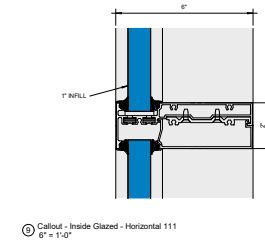
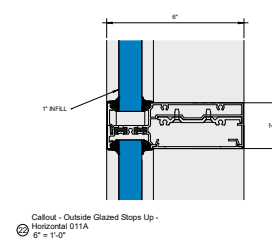
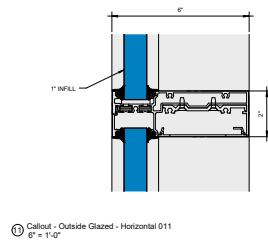
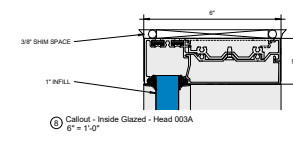
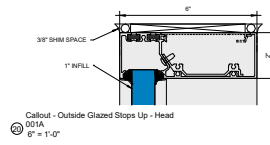
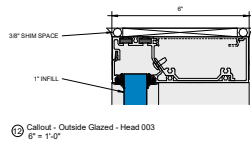
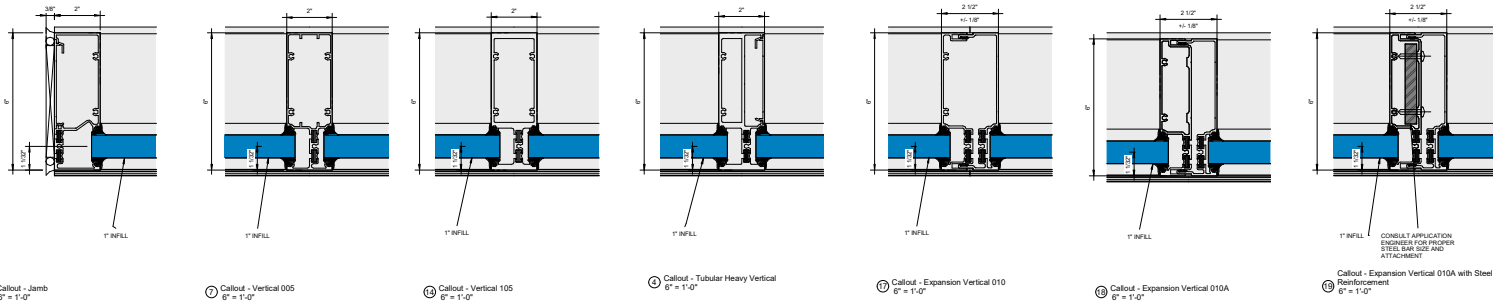
③ Inside Glazed
1 1/2" = 1'-0"

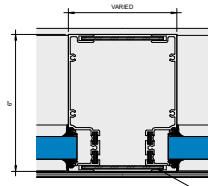


① Corner Options
3/4" = 1'-0"

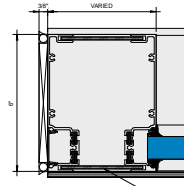
KAWNEER AN ARCONIC COMPANY

555 Guthridge Ct.
Technology Park/Atlanta
Norcross, GA 30092 USA
Tel: +1 770 449 5555

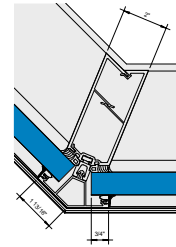




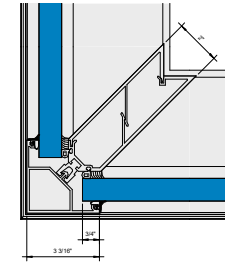
① Corner Callout - Varied Width Post
6" = 1'-0"



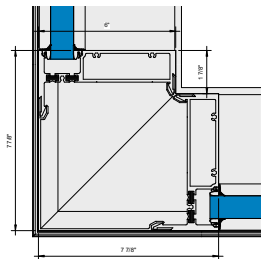
② Corner Callout - Varied Width Post Jamb
6" = 1'-0"



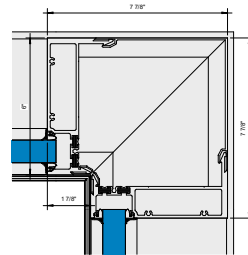
③ Corner Callout - Outside Dart 135
6" = 1'-0"



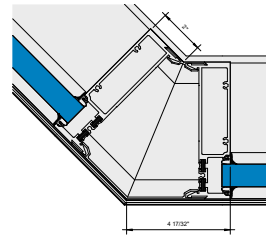
④ Corner Callout - Outside Dart 90
6" = 1'-0"



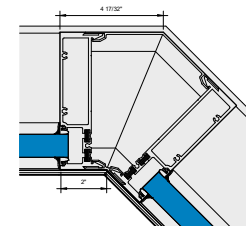
⑤ Corner Callout - Outside 90
6" = 1'-0"



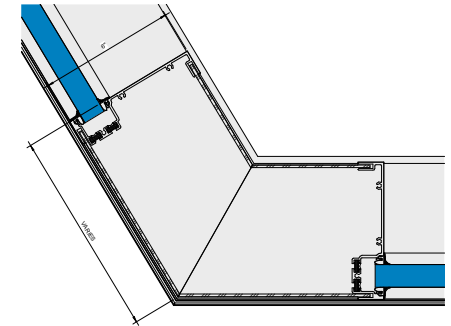
⑥ Corner Callout - Inside 90
6" = 1'-0"



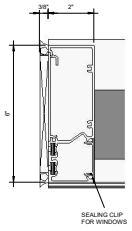
⑦ Corner Callout - Outside 135
6" = 1'-0"



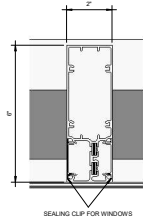
⑧ Corner Callout - Inside 135
6" = 1'-0"



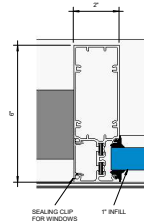
⑨ Corner Callout - Outside Varied Angle
6" = 1'-0"



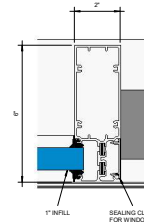
1 Callout - Window Jamb
6" = 1'-0"



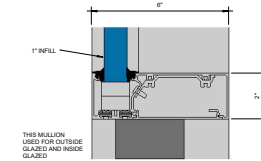
2 Callout - Window Vertical No Pocket
6" = 1'-0"



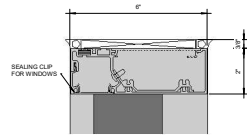
3 Callout - Window Vertical One Pocket Side
6" = 1'-0"



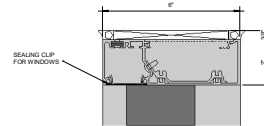
4 Callout - Window Vertical One Pocket Side
6" = 1'-0"



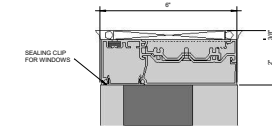
5 Callout - Window Intermediate Horizontal Head 001A
6" = 1'-0"



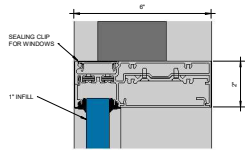
6 Callout - Window Outside Glazed - Head 003
6" = 1'-0"



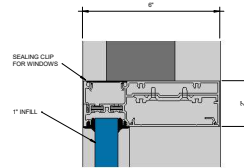
7 Callout - Window Outside Glazed Stops Up - Head 001A
6" = 1'-0"



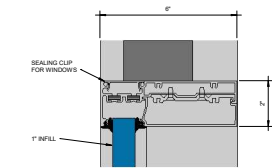
8 Callout - Window Inside Glazed - Head 003A
6" = 1'-0"



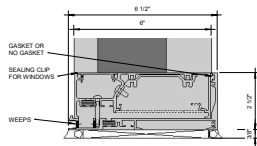
9 Callout - Window Outside Glazed - Intermediate Horizontal 011
6" = 1'-0"



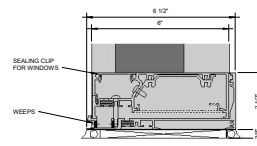
10 Callout - Window Outside Glazed Stops Up - Intermediate Horizontal 011A
6" = 1'-0"



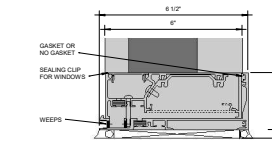
11 Callout - Window Inside Glazed - Intermediate Horizontal 111
6" = 1'-0"



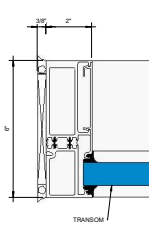
12 Callout - Window Sill 103A - OG
6" = 1'-0"



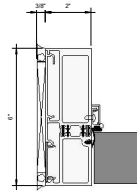
13 Callout - Window Outside Glazed Stops Up - Sill 103
6" = 1'-0"



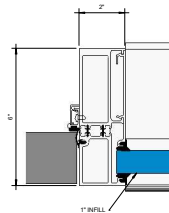
14 Callout - Window Sill 103A - IG
6" = 1'-0"



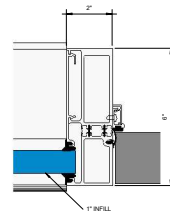
1 Callout - Door - Thermal Transom Jamb A
6" = 1'-0"



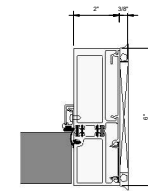
2 Callout - Door - Thermal Jamb A
6" = 1'-0"



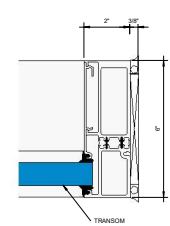
3 Callout - Door - Thermal Door Jamb with
Pocket A
6" = 1'-0"



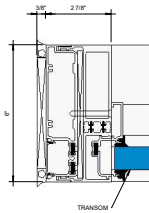
4 Callout - Door - Thermal Door Jamb with
Pocket B
6" = 1'-0"



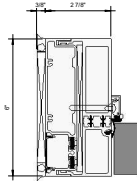
5 Callout - Door - Thermal Jamb B
6" = 1'-0"



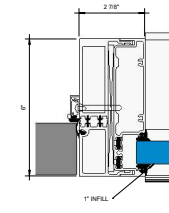
6 Callout - Door - Thermal Transom Jamb B
6" = 1'-0"



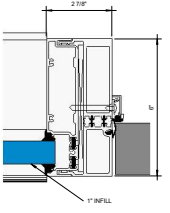
7 Callout - Door - Thermal Two Piece
Transom Jamb A
6" = 1'-0"



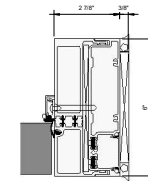
8 Callout - Door - Thermal Two Piece
Jamb A
6" = 1'-0"



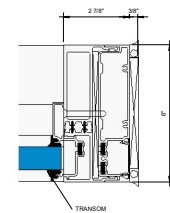
9 Callout - Door - Thermal Two Piece Door
Jamb with Pocket A
6" = 1'-0"



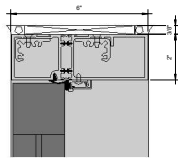
10 Callout - Door - Thermal Two Piece Door
Jamb with Pocket B
6" = 1'-0"



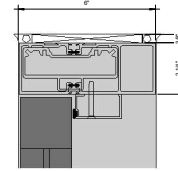
11 Callout - Door - Thermal Two Piece Jamb B
6" = 1'-0"



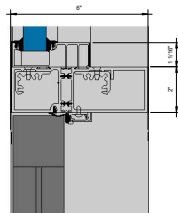
12 Callout - Door - Thermal Two Piece
Transom Jamb B
6" = 1'-0"



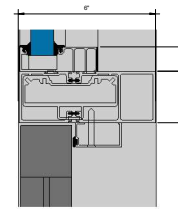
13 Callout - Door - Thermal Header
6" = 1'-0"



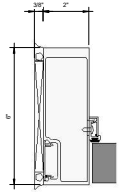
14 Callout - Door - Thermal Header - CoC
6" = 1'-0"



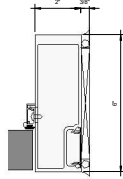
15 Callout - Door - Thermal Transom Header
6" = 1'-0"



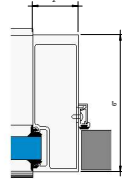
16 Callout - Door - Thermal Transom Header -
CoC
6" = 1'-0"



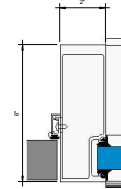
Callout - Door - Non-Thermal Jamb Left
6" = 1'-0"



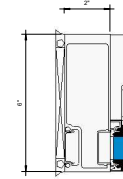
Callout - Door - Non-Thermal Jamb Right
6" = 1'-0"



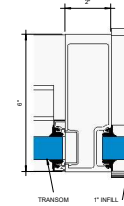
Callout - Door - Non-Thermal Jamb with Pocket Left
6" = 1'-0"



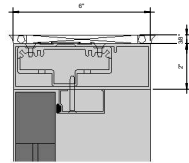
Callout - Door - Non-Thermal Jamb with Pocket Right
6" = 1'-0"



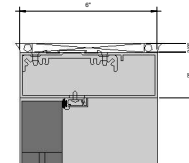
Callout - Door - Non-Thermal Transom Jamb
6" = 1'-0"



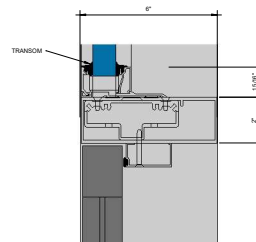
Callout - Door - Non-Thermal Transom Jamb with Pocket
6" = 1'-0"



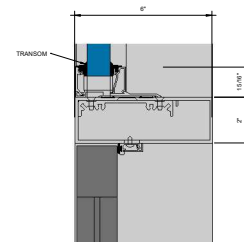
Callout - Door - Non-Thermal Header - CoC
6" = 1'-0"



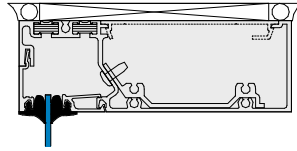
Callout - Door - Non-Thermal Header
6" = 1'-0"



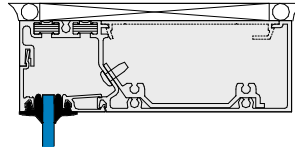
Callout - Door - Non-Thermal Transom Header - CoC
6" = 1'-0"



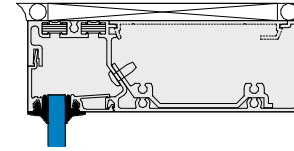
Callout - Door - Non-Thermal Transom Header
6" = 1'-0"



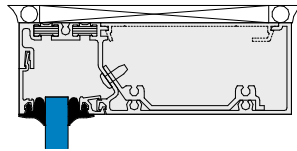
① Glazing Thickness - 1/8"
12" x 1'-0"



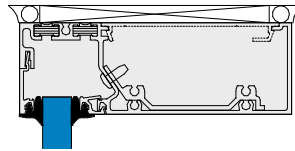
② Glazing Thickness - 1/4"
12" x 1'-0"



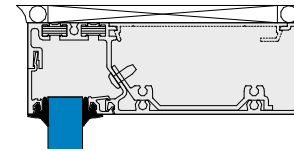
③ Glazing Thickness - 3/8"
12" x 1'-0"



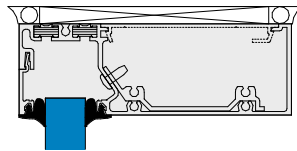
④ Glazing Thickness - 1/2"
12" x 1'-0"



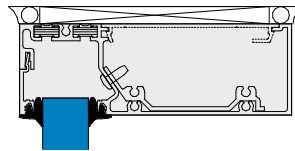
⑤ Glazing Thickness - 5/8"
12" x 1'-0"



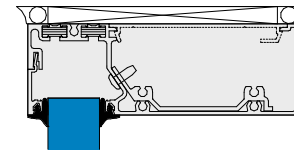
⑥ Glazing Thickness - 3/4"
12" x 1'-0"



⑦ Glazing Thickness - 7/8"
12" x 1'-0"



⑧ Glazing Thickness - 1"
12" x 1'-0"



⑨ Glazing Thickness - 1-1/8"
12" x 1'-0"