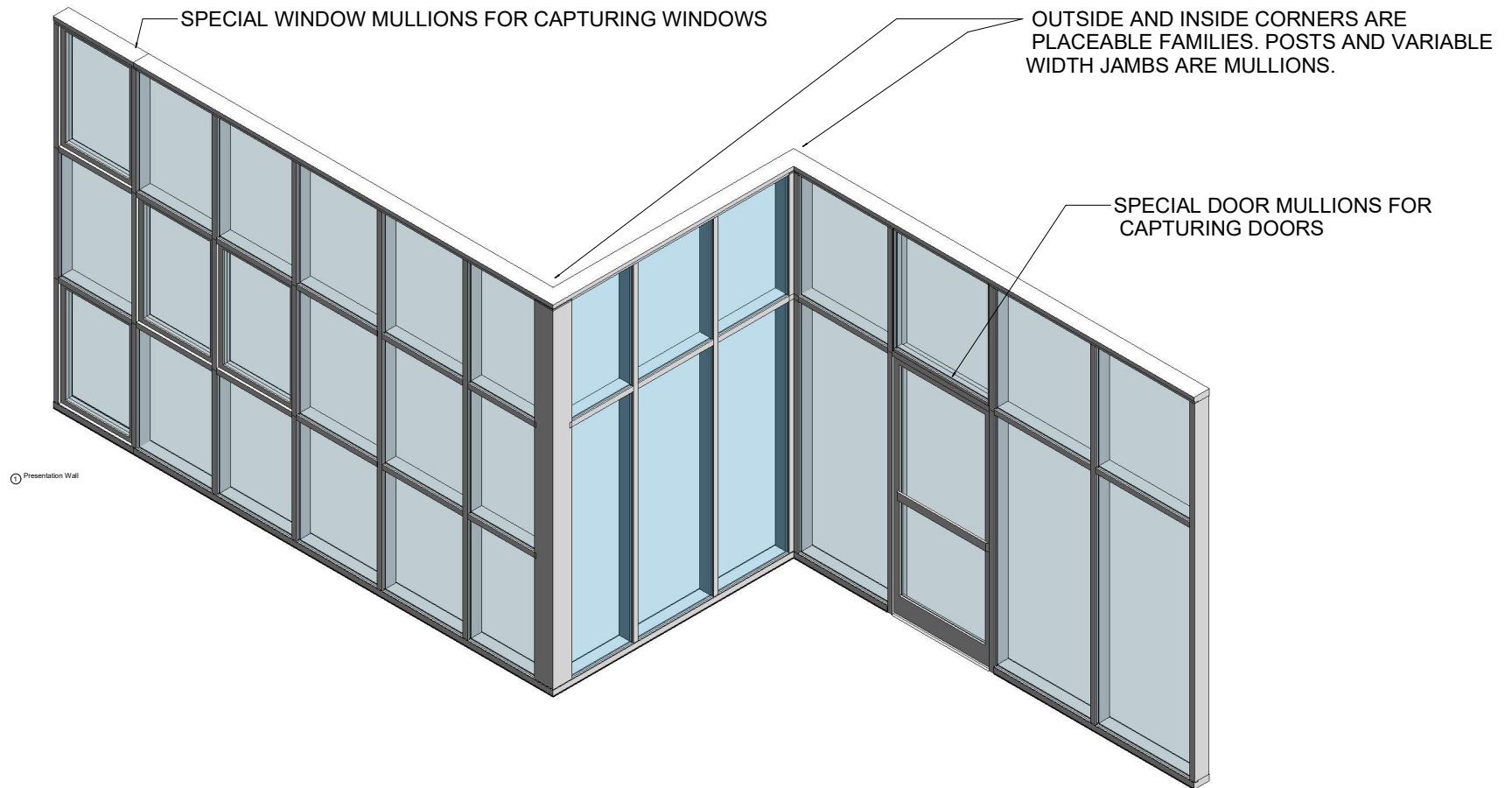


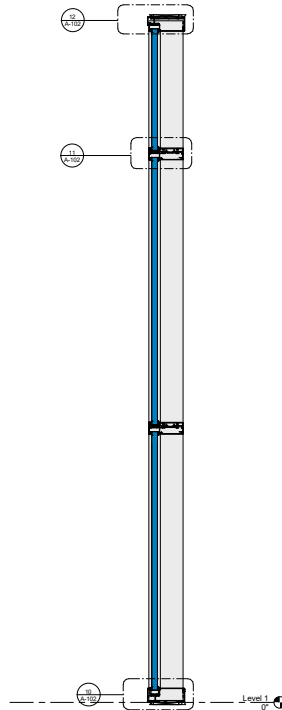
THIS PRODUCT LINE IS THERMALLY BROKEN.



Plan, Elevations & Section

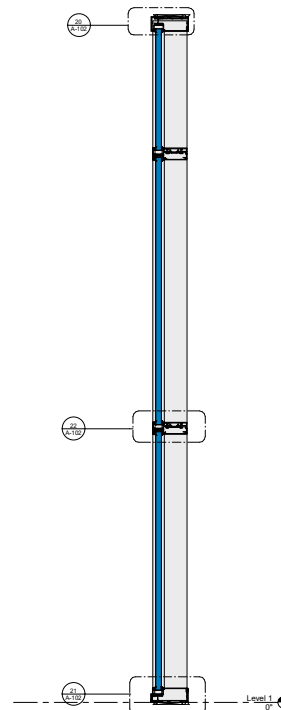


① Basic Wall Example - Outside Glazed
1" = 1'-0"



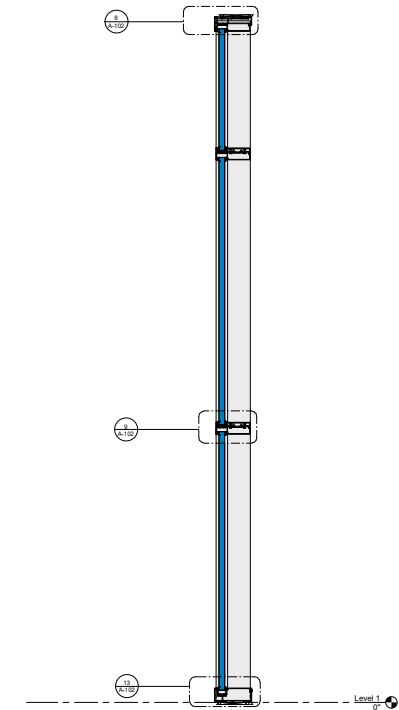
② Outside Glazed
1 1/2" = 1'-0"

③ Basic Wall Example - Outside Glazed Stops
Up
1" = 1'-0"



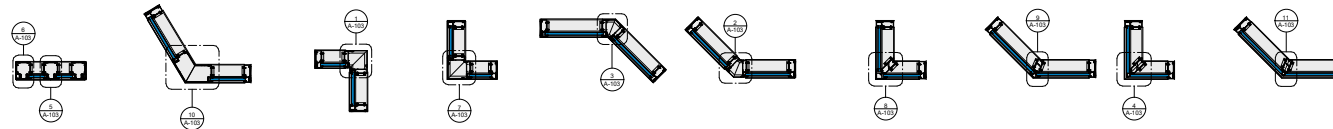
④ Outside Glazed Stops Up
1 1/2" = 1'-0"

⑤ Basic Wall Example - Inside Glazed
1" = 1'-0"



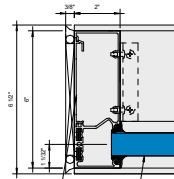
⑥ Inside Glazed
1 1/2" = 1'-0"

⑦ Corner Options
3/4" = 1'-0"

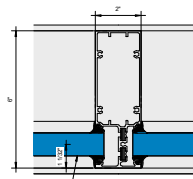


KAWNEER AN ARCONIC COMPANY

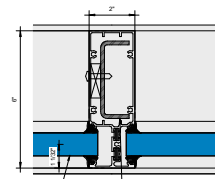
555 Guthridge Ct.
Technology Park/Atlanta
Norcross, GA 30092 USA
Tel: + 1 770 449 5555



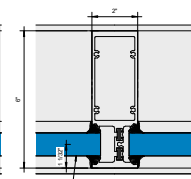
① Callout - Jamb
6" = 1'-0"



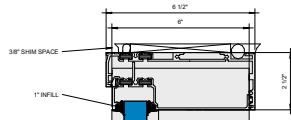
② Callout - Vertical 005
6" = 1'-0"



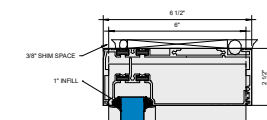
③ Callout - Vertical with Steel 005
6" = 1'-0"



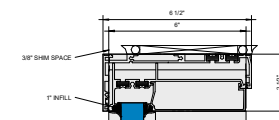
④ Callout - Vertical Heavy 105
6" = 1'-0"



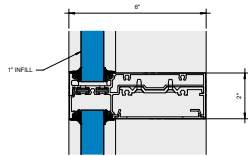
⑤ Callout - Outside Glazed - Head 006 OG
6" = 1'-0"



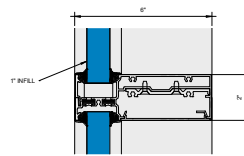
⑥ Callout - Outside Glazed Stops Up - Head 106 EQ
6" = 1'-0"



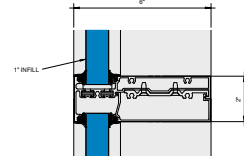
⑦ Callout - Inside Glazed - Head 006 IG
6" = 1'-0"



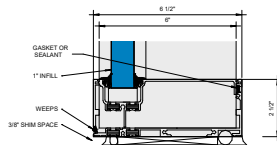
⑧ Callout - Outside Glazed - Horizontal 011
6" = 1'-0"



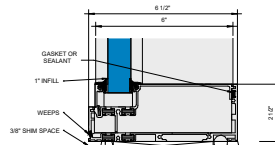
⑨ Callout - Outside Glazed Stops Up - Horizontal 011A
6" = 1'-0"



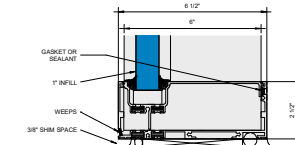
⑩ Callout - Inside Glazed - Horizontal 111
6" = 1'-0"



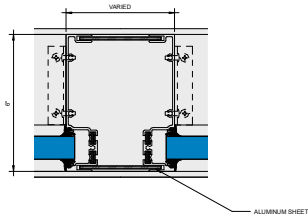
⑪ Callout - Outside Glazed - Sill 106 EQ OG
6" = 1'-0"



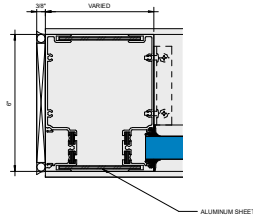
⑫ Callout - Outside Glazed Stops Up - Sill 006 UNEQ
6" = 1'-0"



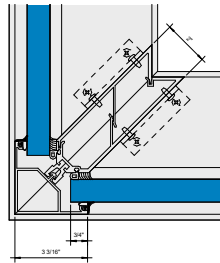
⑬ Callout - Inside Glazed - Sill 106 EQ IG
6" = 1'-0"



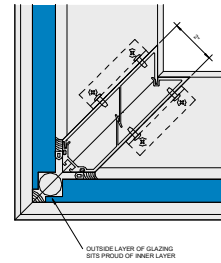
① Corner Callout - Varied Width Post
6" = 1'-0"



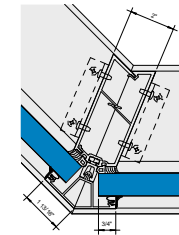
② Corner Callout - Varied Width Jamb
6" = 1'-0"



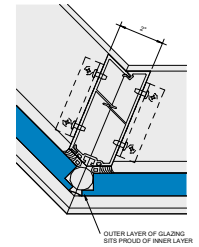
③ Corner Callout - Outside Dart 90
6" = 1'-0"



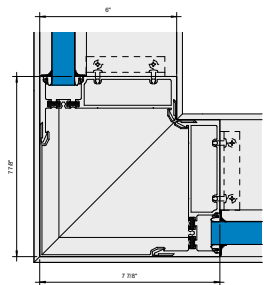
④ Corner Callout - Outside SSG Dart 90
6" = 1'-0"



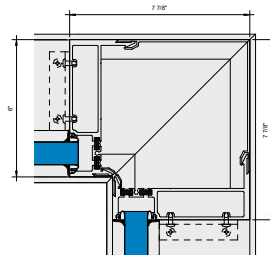
⑤ Corner Callout - Outside Dart 135
6" = 1'-0"



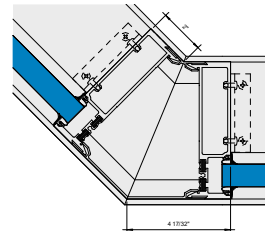
⑥ Corner Callout - Outside SSG Dart 135
6" = 1'-0"



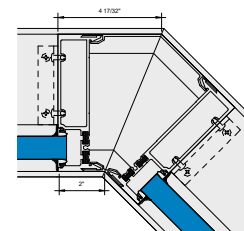
⑦ Corner Callout - Outside 90
6" = 1'-0"



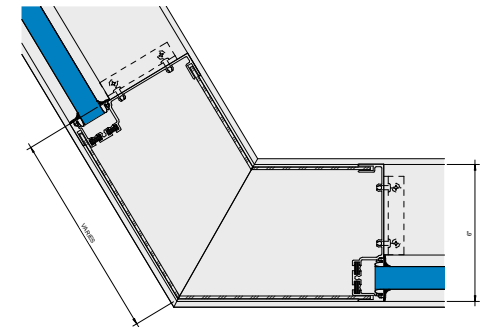
⑧ Corner Callout - Inside 90
6" = 1'-0"



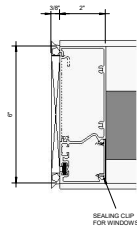
⑨ Corner Callout - Outside 135
6" = 1'-0"



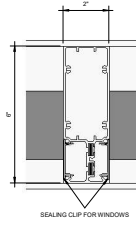
⑩ Corner Callout - Inside 135
6" = 1'-0"



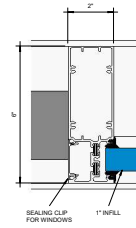
⑪ Corner Callout - Outside Varied Angle
6" = 1'-0"



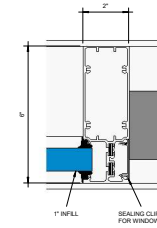
① Callout - Window Jamb
6" = 1'-0"



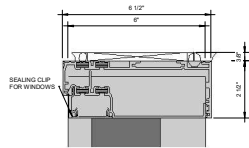
② Callout - Window Vertical No Pocket
6" = 1'-0"



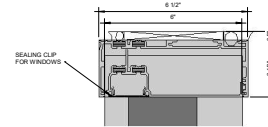
③ Callout - Window Vertical One Pocket Side
A
6" = 1'-0"



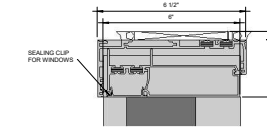
④ Callout - Window Vertical One Pocket Side
B
6" = 1'-0"



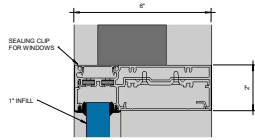
⑤ Callout - Window Outside Glazed - Head
008 EQ
6" = 1'-0"



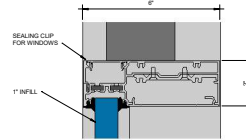
⑥ Callout - Window Outside Glazed Steps Up -
Head 008 EQ
6" = 1'-0"



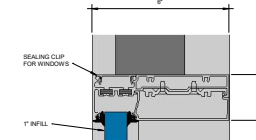
⑦ Callout - Window Inside Glazed - Head 008
IG
6" = 1'-0"



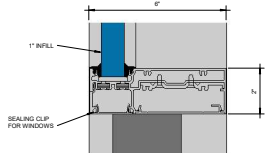
⑧ Callout - Window Outside Glazed -
Intermediate Horizontal Vent Above 011
6" = 1'-0"



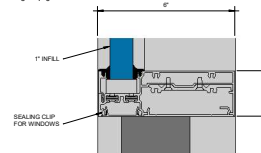
⑩ Callout - Window Outside Glazed Steps Up -
Intermediate Horizontal Vent Above 011A
6" = 1'-0"



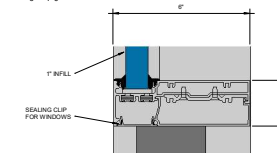
⑨ Callout - Window Inside Glazed -
Intermediate Horizontal Vent Above 111
6" = 1'-0"



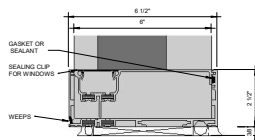
⑪ Callout - Window Outside Glazed -
Intermediate Horizontal Vent Below 011
6" = 1'-0"



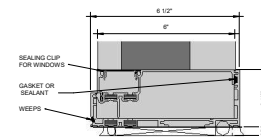
⑬ Callout - Window Outside Glazed Steps Up -
Intermediate Horizontal Vent Below 011A
6" = 1'-0"



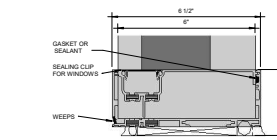
⑫ Callout - Window Inside Glazed -
Intermediate Horizontal Vent Below 111
6" = 1'-0"



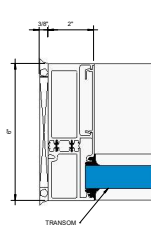
⑭ Callout - Window Sill 006 - EQ OG
6" = 1'-0"



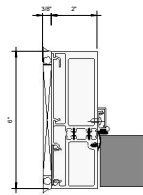
⑮ Callout - Window Outside Glazed Steps Up -
Sill 006 UNEQ
6" = 1'-0"



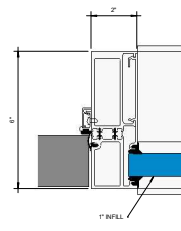
⑯ Callout - Window Sill 006 - EQ IG
6" = 1'-0"



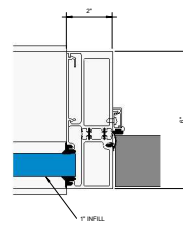
1 Callout - Door - Thermal Transom Jamb A
6" = 1'-0"



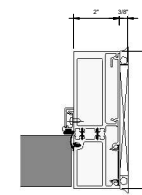
1 Callout - Door - Thermal Jamb A
6" = 1'-0"



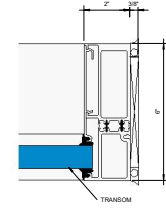
2 Callout - Door - Thermal Door Jamb with Pocket A
6" = 1'-0"



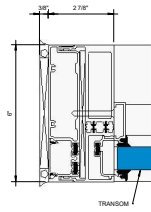
1 Callout - Door - Thermal Door Jamb with Pocket B
6" = 1'-0"



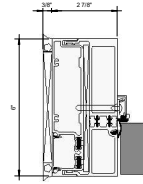
1 Callout - Door - Thermal Jamb B
6" = 1'-0"



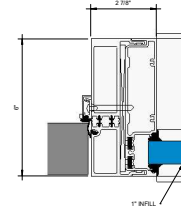
12 Callout - Door - Thermal Transom Jamb B
6" = 1'-0"



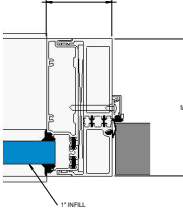
1 Callout - Door - Thermal Two Piece Transom Jamb A
6" = 1'-0"



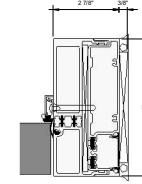
3 Callout - Door - Thermal Two Piece Jamb A
6" = 1'-0"



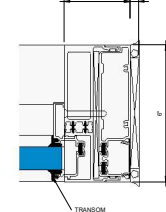
3 Callout - Door - Thermal Two Piece Door Jamb with Pocket A
6" = 1'-0"



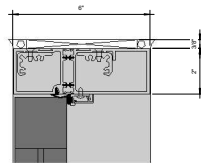
3 Callout - Door - Thermal Two Piece Door Jamb with Pocket B
6" = 1'-0"



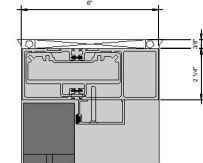
1 Callout - Door - Thermal Two Piece Jamb B
6" = 1'-0"



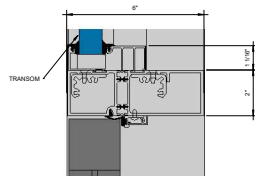
12 Callout - Door - Thermal Two Piece Transom Jamb B
6" = 1'-0"



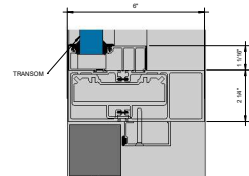
13 Callout - Door - Thermal Head
6" = 1'-0"



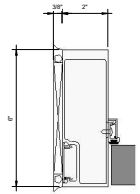
13 Callout - Door - Thermal Head - CoC
6" = 1'-0"



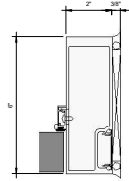
13 Callout - Door - Thermal Transom Head
6" = 1'-0"



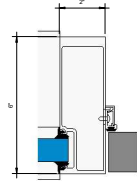
13 Callout - Door - Thermal Transom Head - CoC
6" = 1'-0"



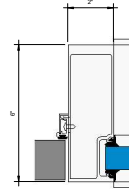
Callout - Door - Non-Thermal Jamb Left
6" = 1'-0"



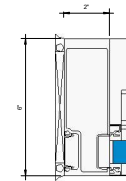
Callout - Door - Non-Thermal Jamb Right
6" = 1'-0"



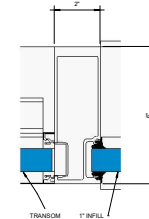
Callout - Door - Non-Thermal Jamb with Pocket Left
6" = 1'-0"



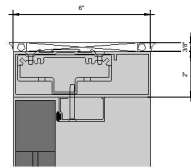
Callout - Door - Non-Thermal Jamb with Pocket Right
6" = 1'-0"



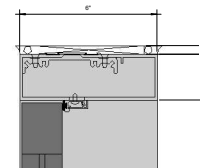
Callout - Door - Non-Thermal Transom Jamb
6" = 1'-0"



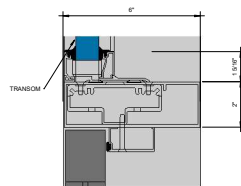
Callout - Door - Non-Thermal Transom Jamb with Pocket Right
6" = 1'-0"



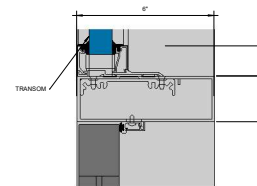
Callout - Door - Non-Thermal Head - CoC
6" = 1'-0"



Callout - Door - Non-Thermal Head
6" = 1'-0"



Callout - Door - Non-Thermal Transom Head - CoC
6" = 1'-0"



Callout - Door - Non-Thermal Transom
6" = 1'-0"

