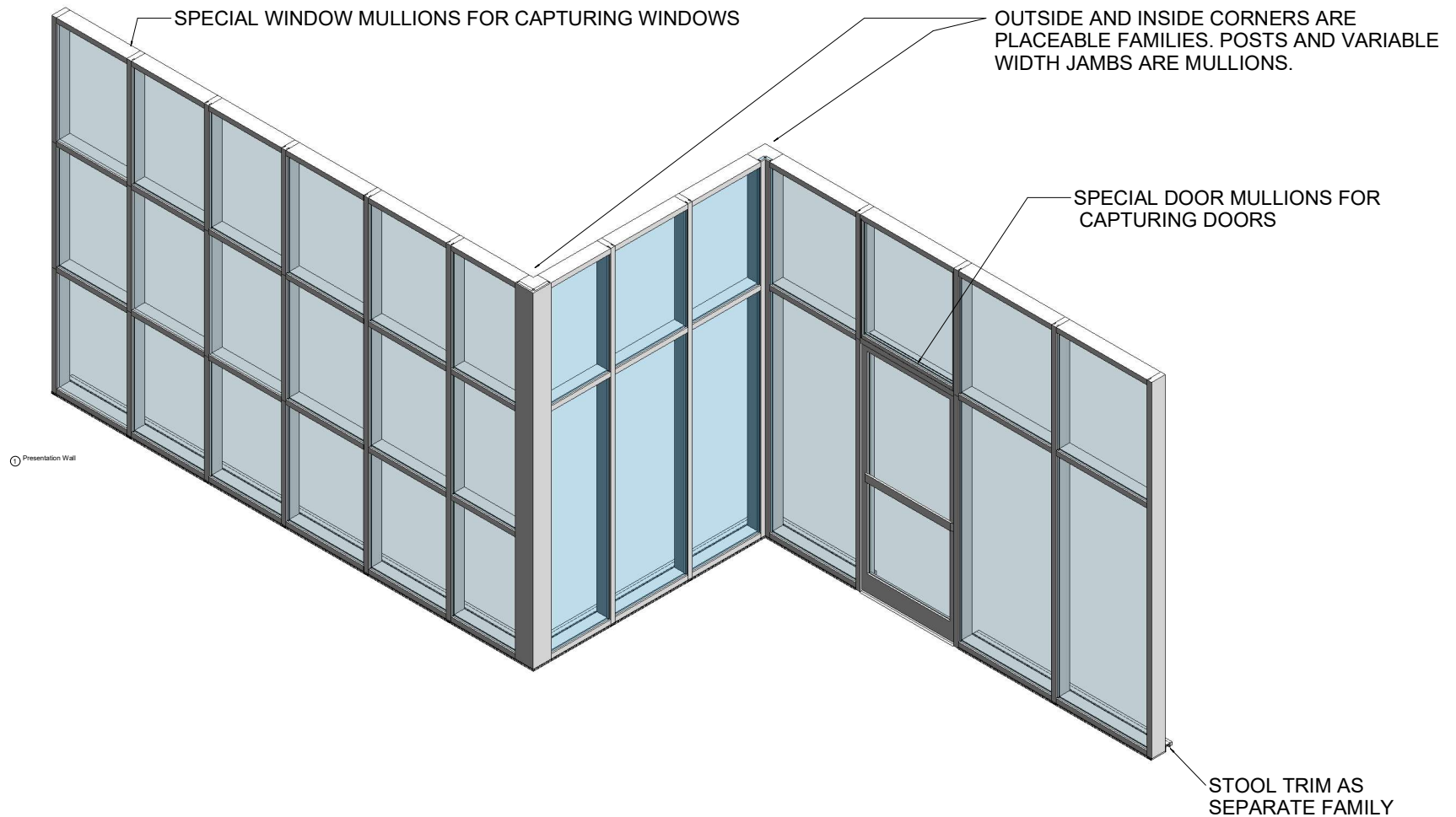


THIS PRODUCT LINE IS NOT THERMALLY BROKEN.



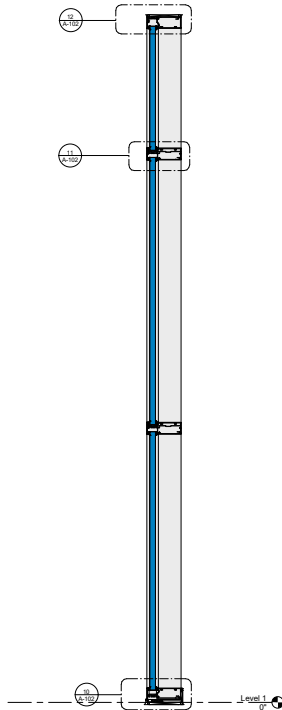
**KAWNEER AN ARCONIC COMPANY**

555 Guthridge Ct.  
Technology Park/Atlanta  
Norcross, GA 30092 USA  
Tel: +1 770 449 5555

## Plan, Elevations & Section

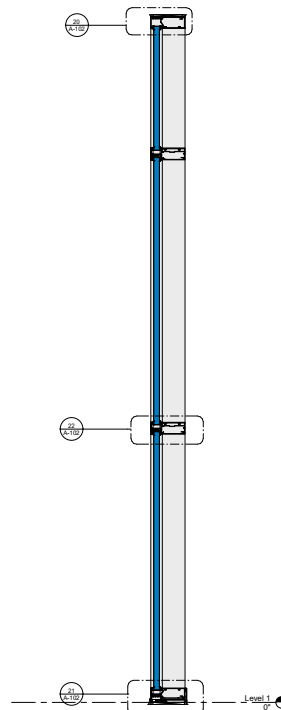


③ Basic Wall Example - Outside Glazed  
1" = 1'-0"



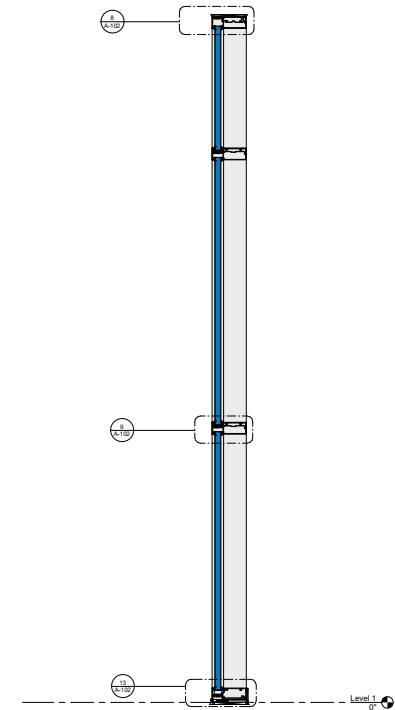
③ Outside Glazed  
1 1/2" = 1'-0"

④ Basic Wall Example - Outside Glazed Stops  
Up  
1" = 1'-0"

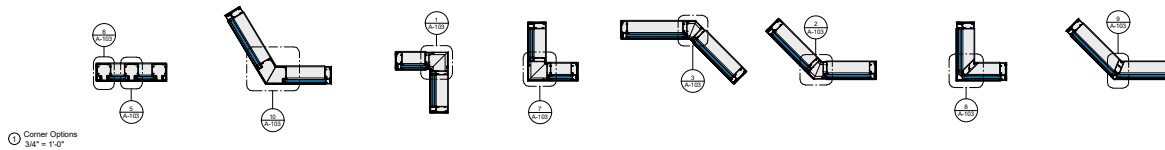


④ Outside Glazed Stops Up  
1 1/2" = 1'-0"

⑤ Basic Wall Example - Inside Glazed  
1" = 1'-0"



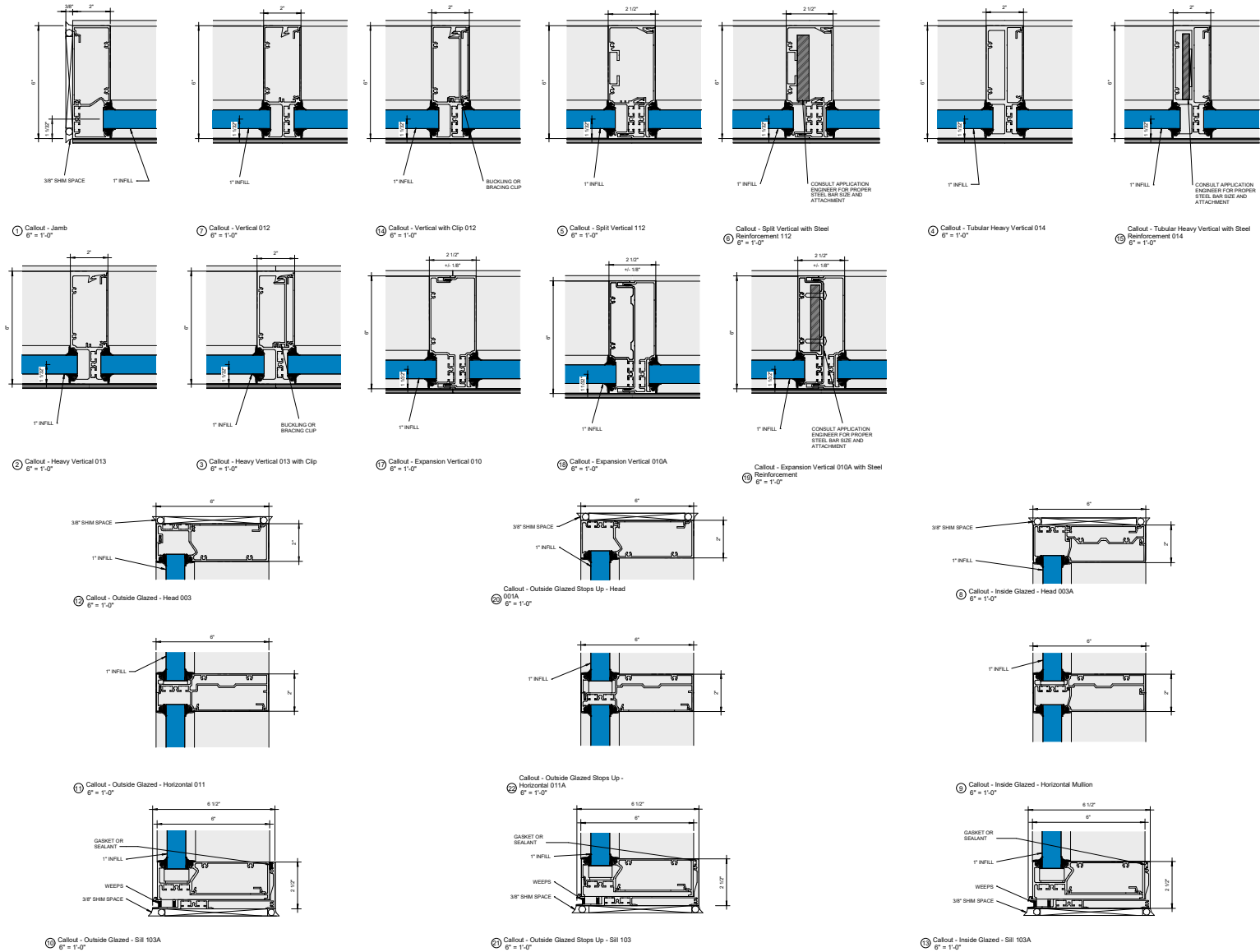
⑤ Inside Glazed  
1 1/2" = 1'-0"



⑥ Corner Options  
3/4" = 1'-0"

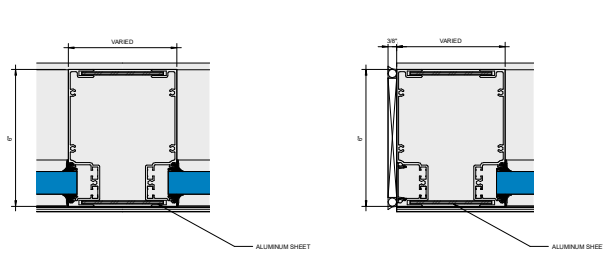
### KAWNEER AN ARCONIC COMPANY

555 Guthridge Ct.  
Technology Park/Atlanta  
Norcross, GA 30092 USA  
Tel: + 1 770 449 5555

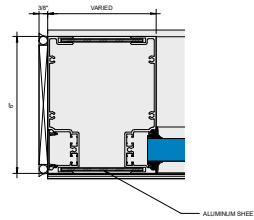


**KAWNEER AN ARCONIC COMPANY**

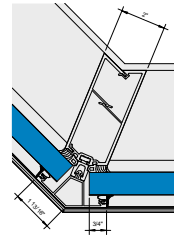
555 Guthridge Ct.  
Technology Park/Atlanta  
Norcross, GA 30092 USA  
Tel: +1 770 449 5555



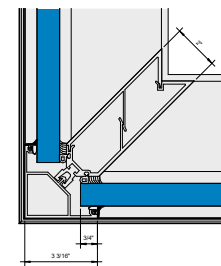
① Corner Callout - Varied Width Post  
6" = 1'-0"



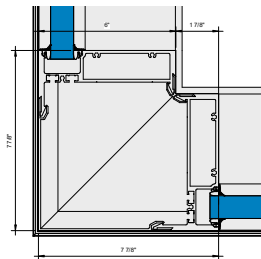
② Corner Callout - Varied Width Post Jamb  
6" = 1'-0"



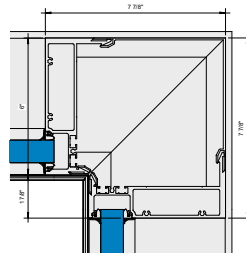
③ Corner Callout - Outside Dart 135  
6" = 1'-0"



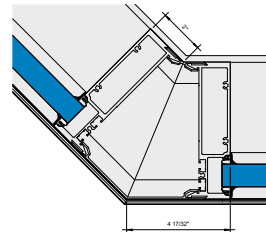
④ Corner Callout - Outside Dart 90  
6" = 1'-0"



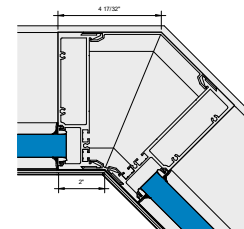
⑤ Corner Callout - Outside 90  
6" = 1'-0"



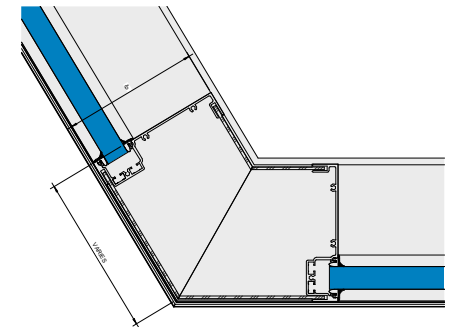
⑥ Corner Callout - Inside 90  
6" = 1'-0"



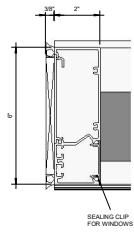
⑦ Corner Callout - Outside 135  
6" = 1'-0"



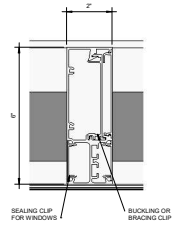
⑧ Corner Callout - Inside 135  
6" = 1'-0"



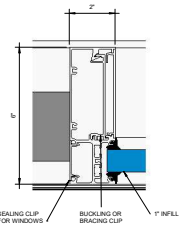
⑨ Corner Callout - Outside Varied Angle  
6" = 1'-0"



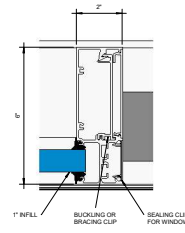
1 Callout - Window Jamb  
6" = 1'-0"



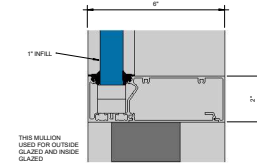
2 Callout - Window Vertical No Pocket  
6" = 1'-0"



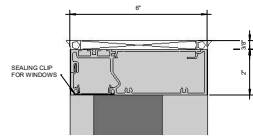
3 Callout - Window Vertical One Pocket Side  
6" = 1'-0"



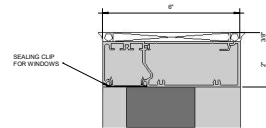
4 Callout - Window Vertical One Pocket Side  
6" = 1'-0"



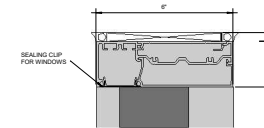
5 Callout - Window Intermediate Horizontal  
6" = 1'-0"



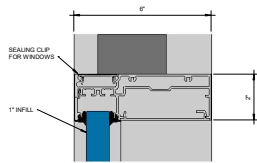
6 Callout - Window Outside Glazed - Head  
003  
6" = 1'-0"



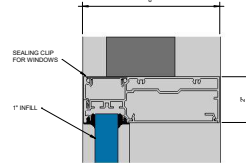
7 Callout - Window Outside Glazed Stops Up - Head  
001A  
6" = 1'-0"



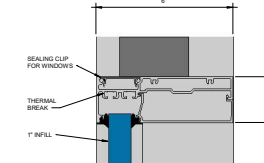
8 Callout - Window Inside Glazed - Head  
003A  
6" = 1'-0"



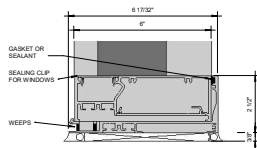
9 Callout - Window Outside Glazed - Intermediate Horizontal  
011  
6" = 1'-0"



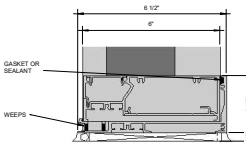
10 Callout - Window Outside Glazed Stops Up - Intermediate Horizontal  
011A  
6" = 1'-0"



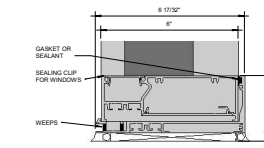
11 Callout - Window Inside Glazed - Intermediate Horizontal  
111  
6" = 1'-0"



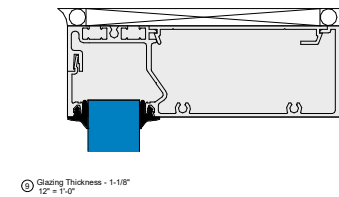
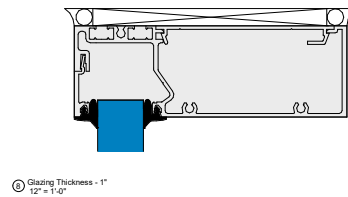
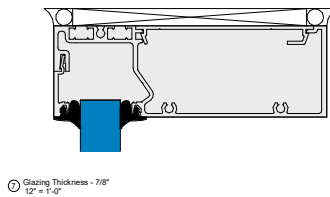
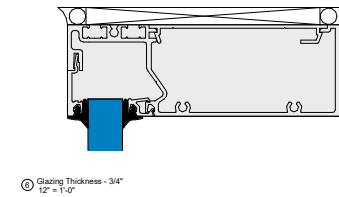
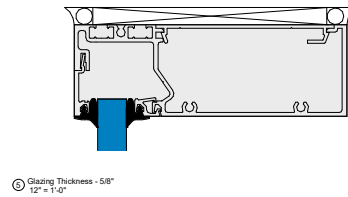
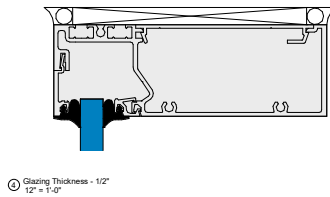
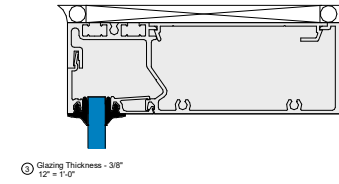
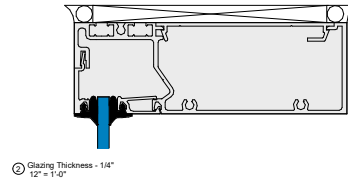
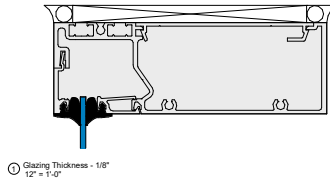
12 Callout - Window Sill 103A  
6" = 1'-0"

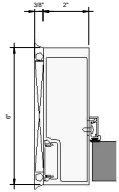


13 Callout - Window Outside Glazed Stops Up - Sill  
103  
6" = 1'-0"

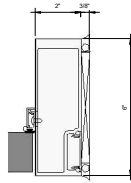


14 Callout - Window Sill 103A - IG  
6" = 1'-0"

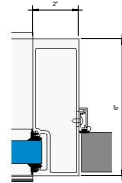




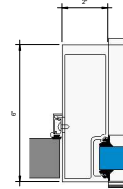
① Callout - Door - Non-Thermal Jamb Left  
6' = 1'-0"



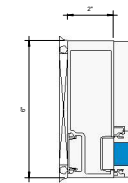
② Callout - Door - Non-Thermal Jamb Right  
6' = 1'-0"



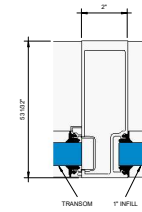
③ Callout - Door - Non-Thermal Jamb with Pocket Left  
6' = 1'-0"



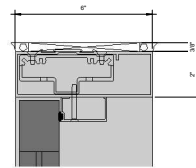
④ Callout - Door - Non-Thermal Jamb with Pocket Right  
6' = 1'-0"



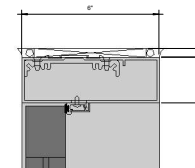
⑤ Callout - Door - Non-Thermal Transom Jamb  
6' = 1'-0"



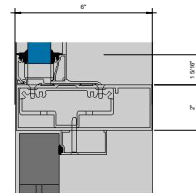
⑥ Callout - Door - Non-Thermal Transom Jamb with Pocket Right  
6' = 1'-0"



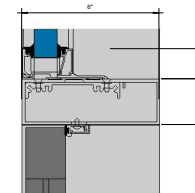
⑦ Callout - Door - Non-Thermal Head - CoC  
6' = 1'-0"



⑧ Callout - Door - Non-Thermal Head  
6' = 1'-0"



⑨ Callout - Door - Non-Thermal Transom Head - CoC  
6' = 1'-0"



⑩ Callout - Door - Non-Thermal Transom Head  
6' = 1'-0"