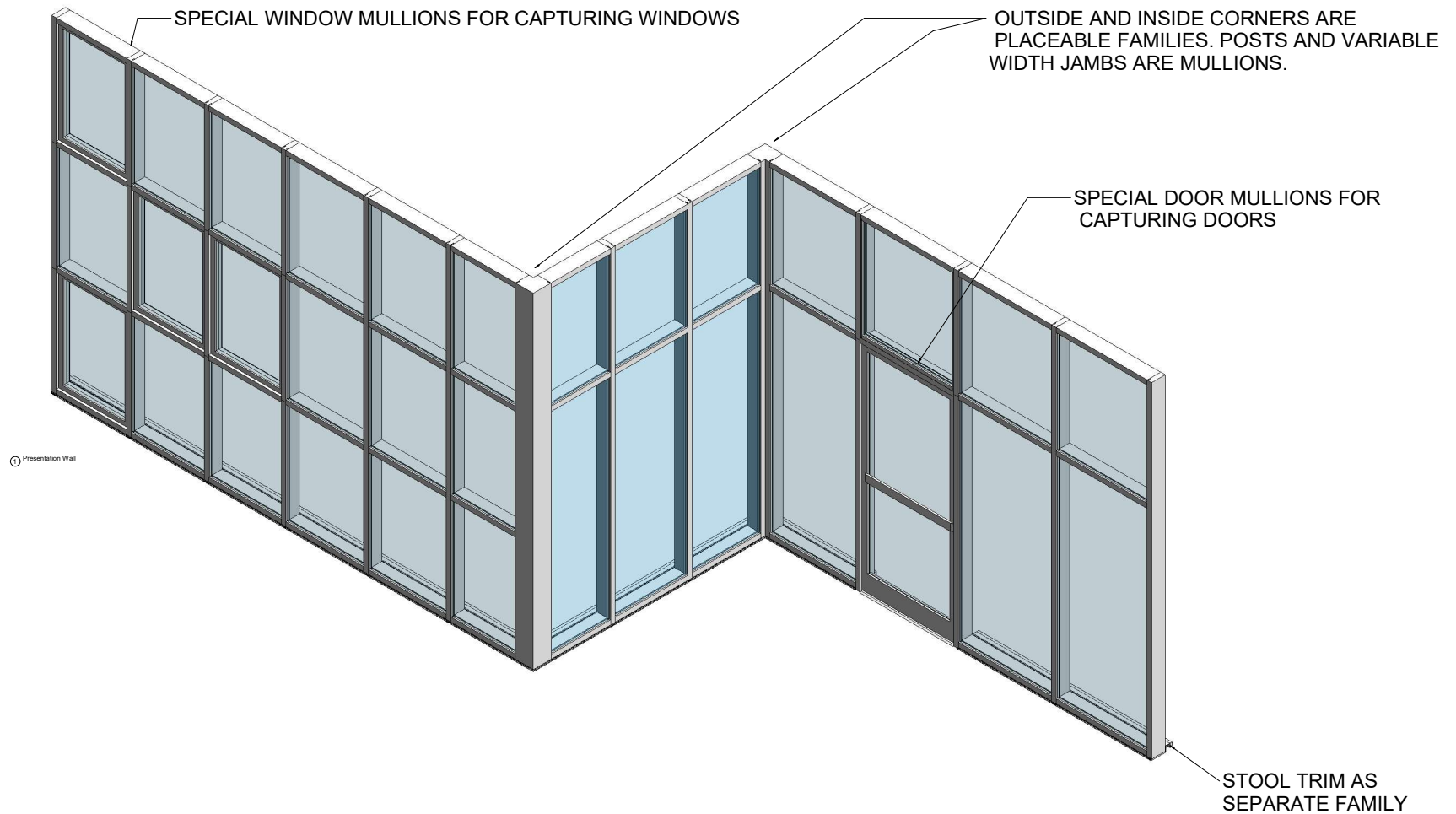


THIS PRODUCT LINE IS NOT THERMALLY BROKEN.



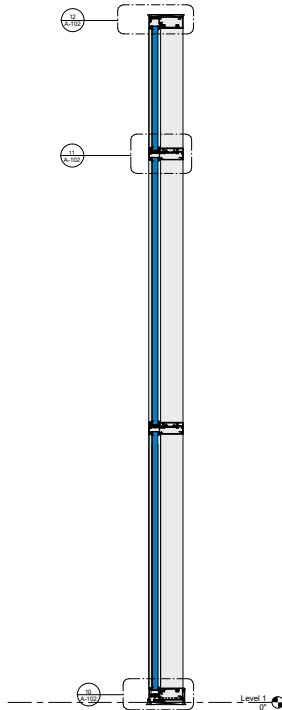
**KAWNEER AN ARCONIC COMPANY**

555 Guthridge Ct.  
Technology Park/Atlanta  
Norcross, GA 30092 USA  
Tel: +1 770 449 5555

## Plan, Elevations & Section

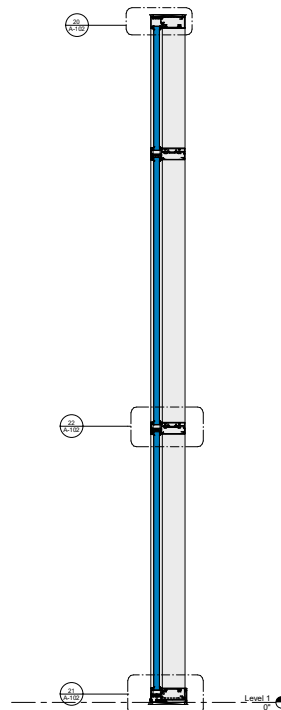


① Basic Wall Example - Outside Glazed  
1" = 1'-0"



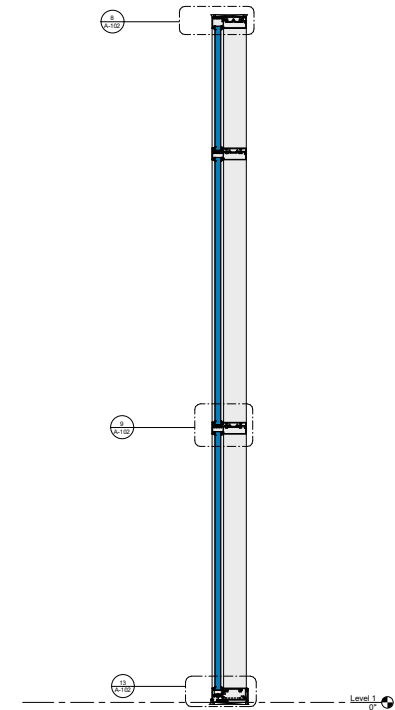
② Outside Glazed  
1 1/2" = 1'-0"

③ Basic Wall Example - Outside Glazed Stops  
Up  
1" = 1'-0"

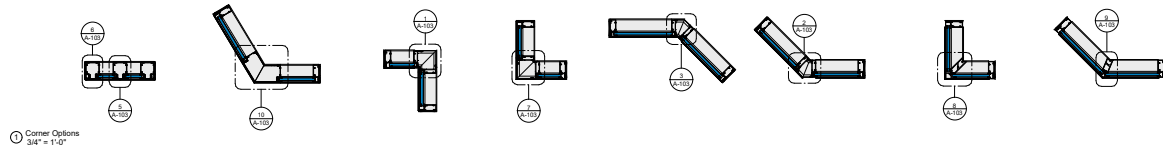


④ Outside Glazed Stops Up  
1 1/2" = 1'-0"

⑤ Basic Wall Example - Inside Glazed  
1" = 1'-0"



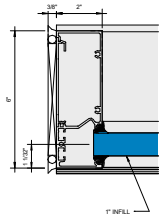
⑥ Inside Glazed  
1 1/2" = 1'-0"



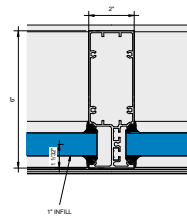
⑦ Corner Options  
3/4" = 1'-0"

### KAWNEER AN ARCONIC COMPANY

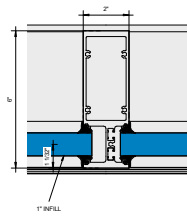
555 Guthridge Ct.  
Technology Park/Atlanta  
Norcross, GA 30092 USA  
Tel: + 1 770 449 5555



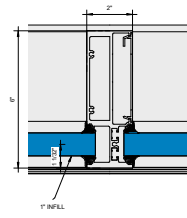
1 Callout - Jamb  
6\"/>



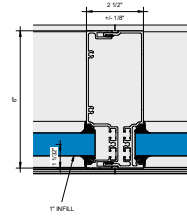
2 Callout - Vertical 005  
6\"/>



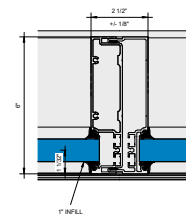
3 Callout - Vertical 105  
6\"/>



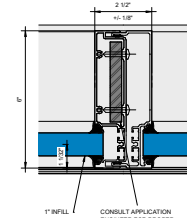
4 Callout - Tubular Heavy Vertical  
6\"/>



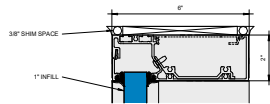
5 Callout - Expansion Vertical 010  
6\"/>



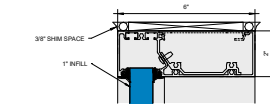
6 Callout - Expansion Vertical 010A  
6\"/>



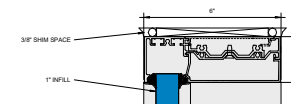
7 Callout - Expansion Vertical 010A with Steel Reinforcement  
6\"/>



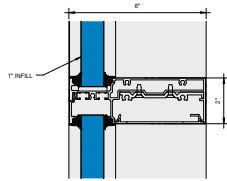
8 Callout - Outside Glazed - Head 003  
6\"/>



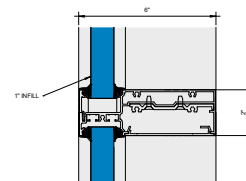
9 Callout - Outside Glazed Stops Up - Head 001A  
6\"/>



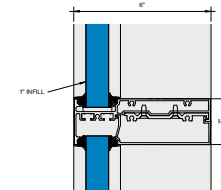
10 Callout - Inside Glazed - Head 003A  
6\"/>



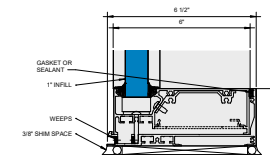
11 Callout - Outside Glazed - Horizontal 011  
6\"/>



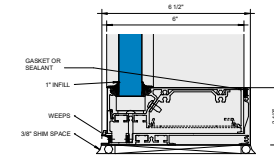
12 Callout - Outside Glazed Stops Up - Horizontal 011A  
6\"/>



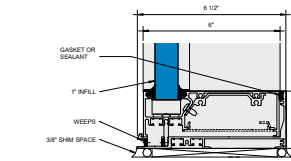
13 Callout - Inside Glazed - Horizontal 111  
6\"/>



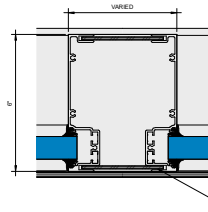
14 Callout - Outside Glazed - Sill 103A  
6\"/>



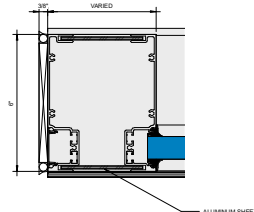
15 Callout - Outside Glazed Stops Up - Sill 103  
6\"/>



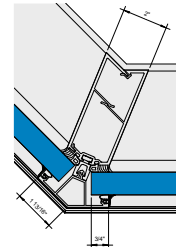
16 Callout - Inside Glazed - Sill 103A  
6\"/>



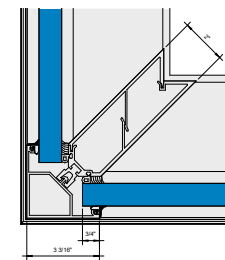
① Corner Callout - Varied Width Post  
6" = 1'-0"



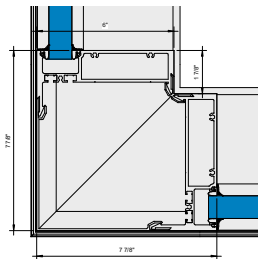
② Corner Callout - Varied Width Post Jamb  
6" = 1'-0"



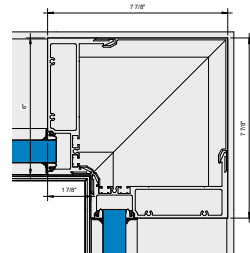
③ Corner Callout - Outside Dart 135  
6" = 1'-0"



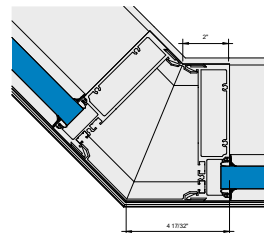
④ Corner Callout - Outside Dart 90  
6" = 1'-0"



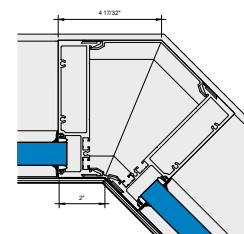
⑤ Corner Callout - Outside 90  
6" = 1'-0"



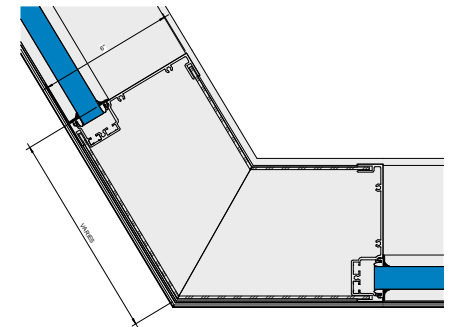
⑥ Corner Callout - Inside 90  
6" = 1'-0"



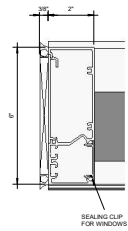
⑦ Corner Callout - Outside 135  
6" = 1'-0"



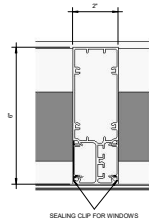
⑧ Corner Callout - Inside 135  
6" = 1'-0"



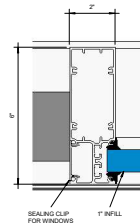
⑨ Corner Callout - Outside Varied Angle  
6" = 1'-0"



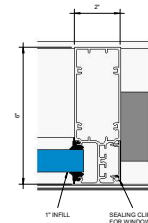
1 Callout - Window Jamb  
6" = 1'-0"



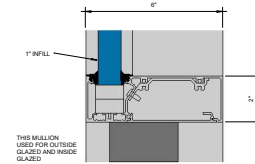
2 Callout - Window Vertical No Pocket  
6" = 1'-0"



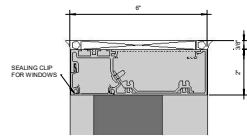
3 Callout - Window Vertical One Pocket Side  
6" = 1'-0"



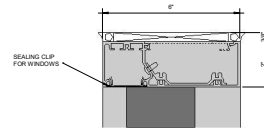
4 Callout - Window Vertical One Pocket Side  
6" = 1'-0"



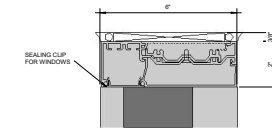
5 Callout - Window Intermediate Horizontal  
6" = 1'-0"



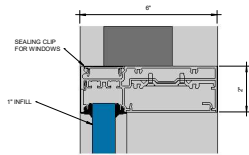
6 Callout - Window Outside Glazed - Head  
003  
6" = 1'-0"



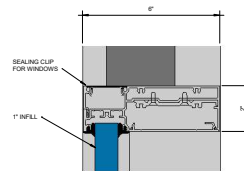
7 Callout - Window Outside Glazed Stops Up - Head 001A  
6" = 1'-0"



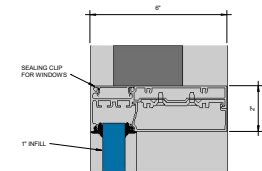
8 Callout - Window Inside Glazed - Head  
003A  
6" = 1'-0"



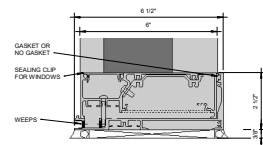
9 Callout - Window Outside Glazed - Intermediate Horizontal 011  
6" = 1'-0"



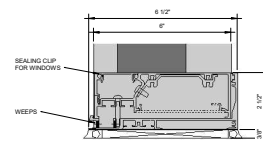
10 Callout - Window Outside Glazed Stops Up - Intermediate Horizontal 011A  
6" = 1'-0"



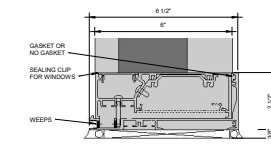
11 Callout - Window Inside Glazed - Intermediate Horizontal 111  
6" = 1'-0"



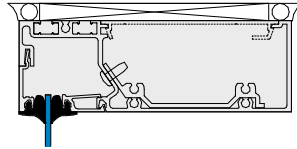
12 Callout - Window SII 103A - OG  
6" = 1'-0"



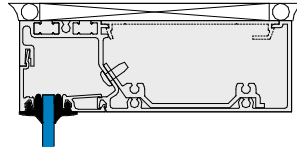
13 Callout - Window Outside Glazed Stops Up - SII 103  
6" = 1'-0"



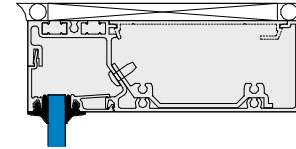
14 Callout - Window SII 103A - IG  
6" = 1'-0"



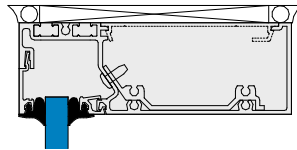
① Glazing Thickness - 1/8"  
12" x 1'-0"



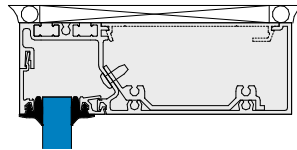
② Glazing Thickness - 1/4"  
12" x 1'-0"



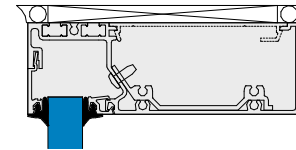
③ Glazing Thickness - 3/8"  
12" x 1'-0"



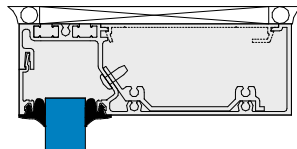
④ Glazing Thickness - 1/2"  
12" x 1'-0"



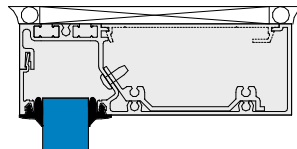
⑤ Glazing Thickness - 5/8"  
12" x 1'-0"



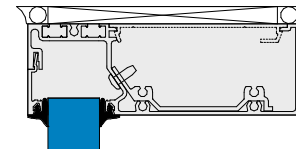
⑥ Glazing Thickness - 3/4"  
12" x 1'-0"



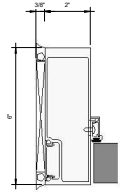
⑦ Glazing Thickness - 7/8"  
12" x 1'-0"



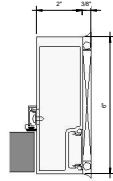
⑧ Glazing Thickness - 1"  
12" x 1'-0"



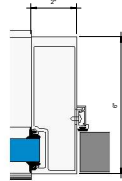
⑨ Glazing Thickness - 1-1/8"  
12" x 1'-0"



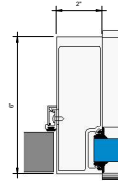
③ Callout - Door - Non-Thermal Jamb Left  
6" = 1'-0"



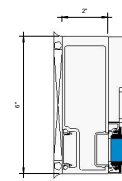
③ Callout - Door - Non-Thermal Jamb Right  
6" = 1'-0"



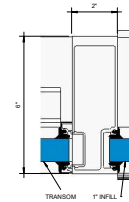
⑦ Callout - Door - Non-Thermal Jamb with Pocket Left  
6" = 1'-0"



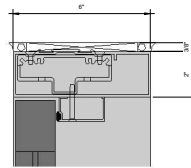
⑦ Callout - Door - Non-Thermal Jamb with Pocket Right  
6" = 1'-0"



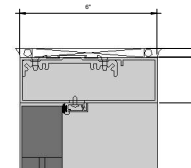
④ Callout - Door - Non-Thermal Transom  
6" = 1'-0"



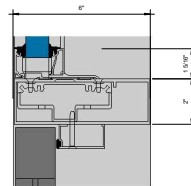
⑩ Callout - Door - Non-Thermal Transom Jamb with Pocket  
6" = 1'-0"



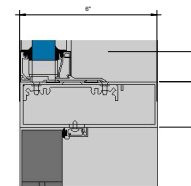
① Callout - Door - Non-Thermal Head - CoC  
6" = 1'-0"



② Callout - Door - Non-Thermal Head  
6" = 1'-0"



④ Callout - Door - Non-Thermal Transom Head - CoC  
6" = 1'-0"



④ Callout - Door - Non-Thermal Transom Head  
6" = 1'-0"