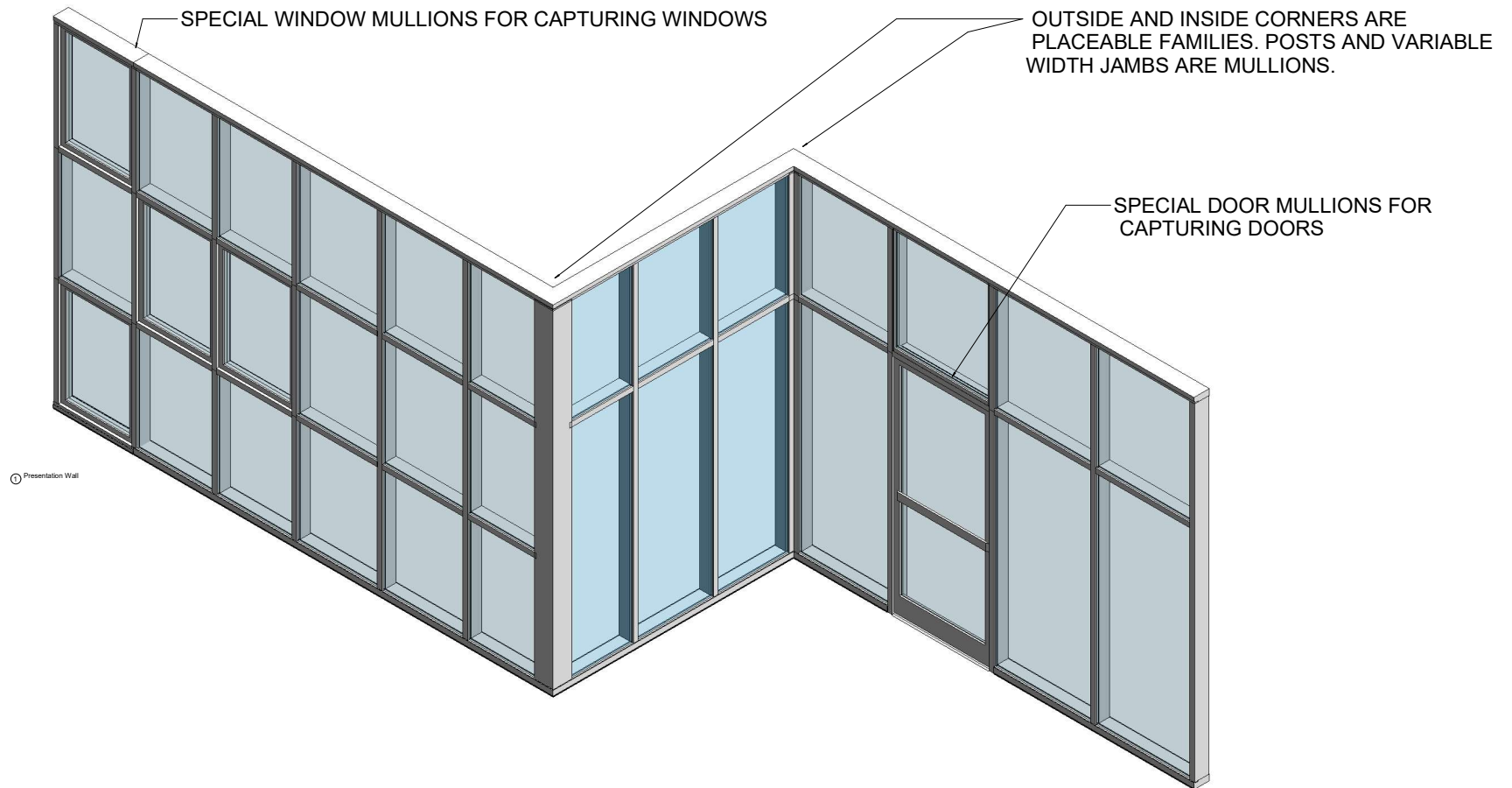


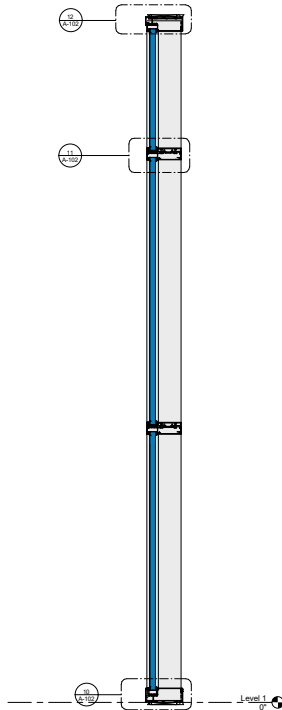
THIS PRODUCT LINE IS NOT THERMALLY BROKEN.



Plan, Elevations & Section

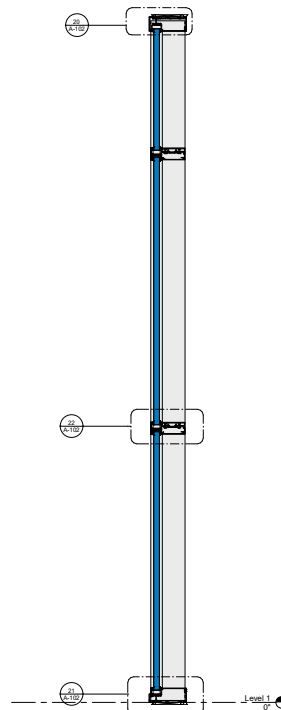


① Basic Wall Example - Outside Glazed
1" = 1'-0"



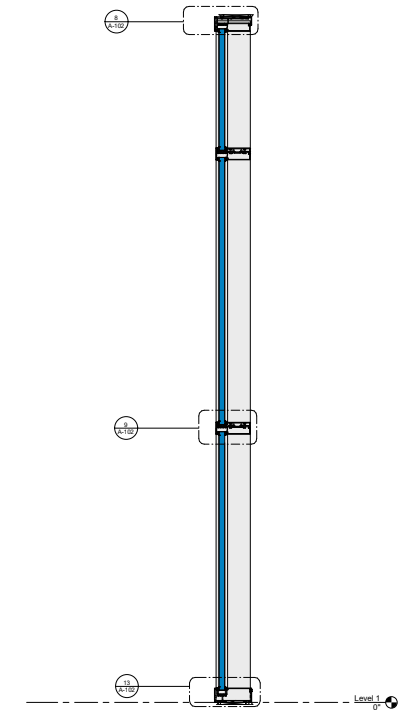
② Outside Glazed
1 1/2" = 1'-0"

③ Basic Wall Example - Outside Glazed Stops
Up
1" = 1'-0"



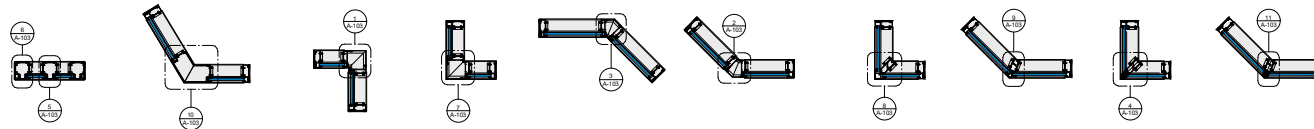
④ Outside Glazed Stops Up
1 1/2" = 1'-0"

⑤ Basic Wall Example - Inside Glazed
1" = 1'-0"



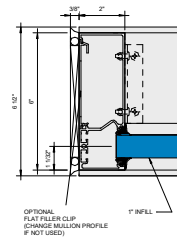
⑥ Inside Glazed
1 1/2" = 1'-0"

⑦ Corner Options
3/4" = 1'-0"

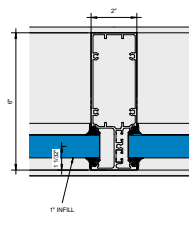


KAWNEER AN ARCONIC COMPANY

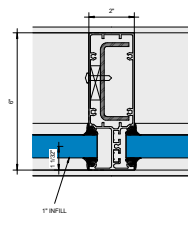
555 Guthridge Ct.
Technology Park/Atlanta
Norcross, GA 30092 USA
Tel: +1 770 449 5555



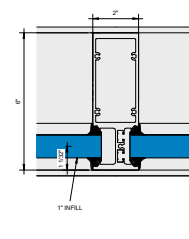
1 Callout - Jamb
6" = 1'-0"



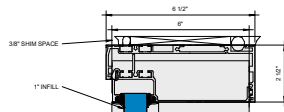
2 Callout - Vertical 005
6" = 1'-0"



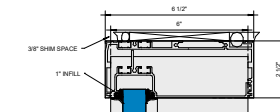
3 Callout - Vertical with Steel 005
6" = 1'-0"



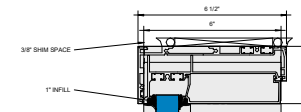
4 Callout - Vertical Heavy 105
6" = 1'-0"



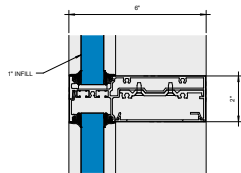
5 Callout - Outside Glazed - Head 006 OG
6" = 1'-0"



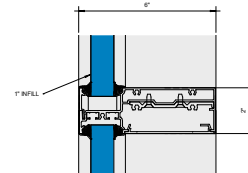
6 Callout - Outside Glazed Stops Up - Head 006 EQ
6" = 1'-0"



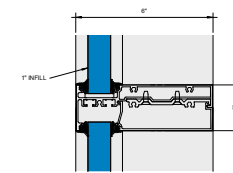
7 Callout - Inside Glazed - Head 006 IG
6" = 1'-0"



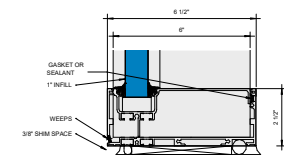
8 Callout - Outside Glazed - Horizontal 011
6" = 1'-0"



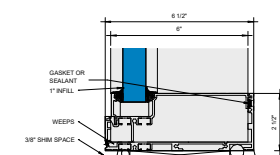
9 Callout - Outside Glazed Stops Up - Horizontal 011A
6" = 1'-0"



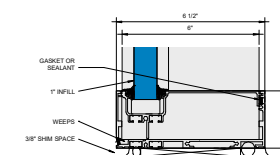
10 Callout - Inside Glazed - Horizontal Mullion
6" = 1'-0"



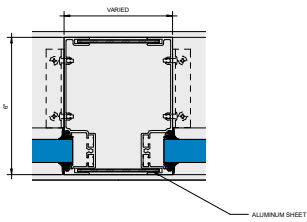
11 Callout - Outside Glazed - Sill 106 EQ OG
6" = 1'-0"



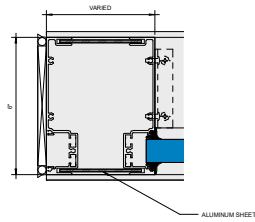
12 Callout - Outside Glazed Stops Up - Sill 106 EQ
6" = 1'-0"



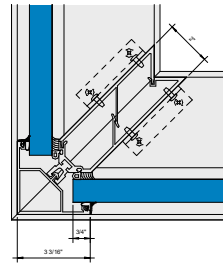
13 Callout - Inside Glazed - Sill 106 EQ IG
6" = 1'-0"



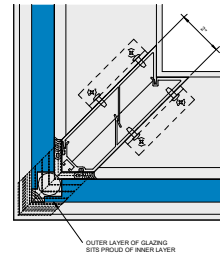
① Corner Callout - Varied Width Post
6" = 1'-0"



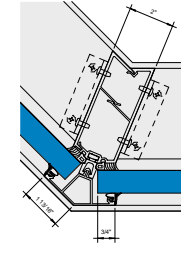
② Corner Callout - Varied Width Post Jamb
6" = 1'-0"



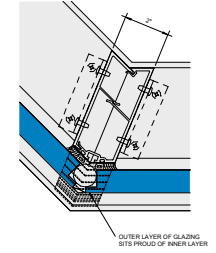
③ Corner Callout - Outside Dart 90
6" = 1'-0"



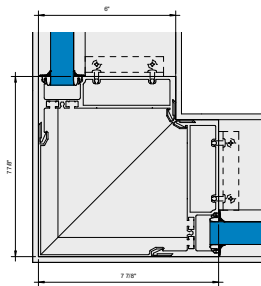
④ Corner Callout - Outside SSG Dart 90
6" = 1'-0"



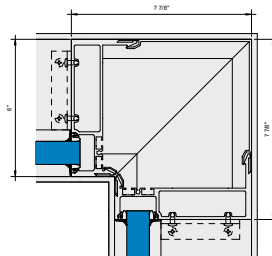
⑤ Corner Callout - Outside Dart 135
6" = 1'-0"



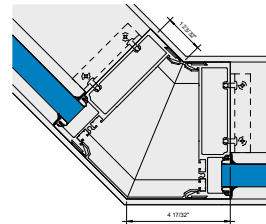
⑥ Corner Callout - Outside SSG Dart 135
6" = 1'-0"



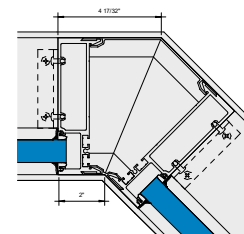
⑦ Corner Callout - Outside 90
6" = 1'-0"



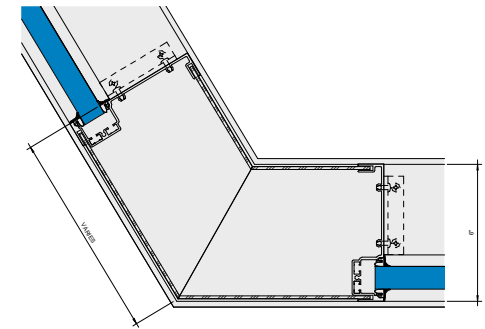
⑧ Corner Callout - Inside 90
6" = 1'-0"



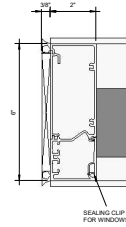
⑨ Corner Callout - Outside 135
6" = 1'-0"



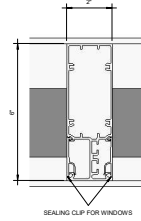
⑩ Corner Callout - Inside 135
6" = 1'-0"



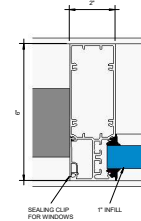
⑪ Corner Callout - Outside Varied Angle
6" = 1'-0"



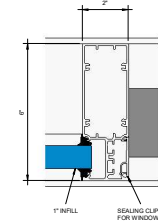
1 Callout - Window Jamb
6" = 1'-0"



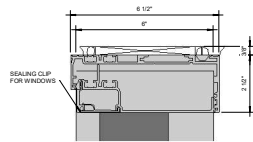
2 Callout - Window Vertical No Pocket
6" = 1'-0"



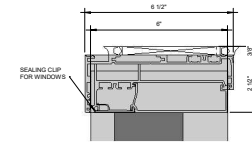
3 Callout - Window Vertical One Pocket Side
6" = 1'-0"



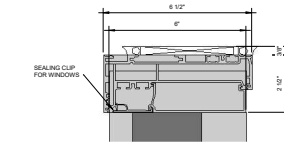
4 Callout - Window Vertical One Pocket Side
6" = 1'-0"



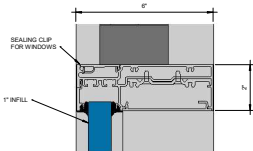
5 Callout - Window Outside Glazed - Head
006 OG
6" = 1'-0"



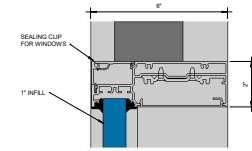
6 Callout - Window Outside Glazed Stops Up -
Head 106 EQ
6" = 1'-0"



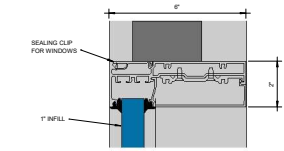
7 Callout - Window Inside Glazed - Head 006
IG
6" = 1'-0"



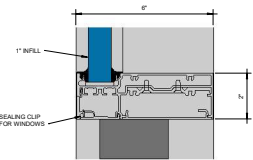
8 Callout - Window Outside Glazed -
Intermediate Horizontal 011 Vent Above
6" = 1'-0"



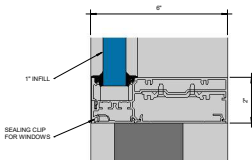
9 Callout - Window Outside Glazed Stops Up -
Intermediate Horizontal 011A Vent Above
6" = 1'-0"



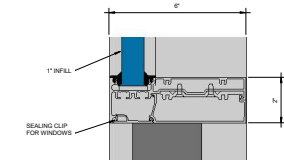
10 Callout - Window Inside Glazed -
Intermediate Horizontal 111 Vent Above
6" = 1'-0"



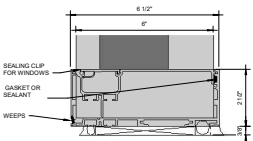
11 Callout - Window Outside Glazed -
Intermediate Horizontal 011 Vent Below
6" = 1'-0"



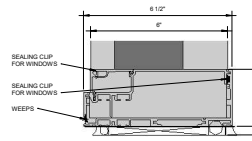
12 Callout - Window Outside Glazed Stops Up -
Intermediate Horizontal 011A Vent Below
6" = 1'-0"



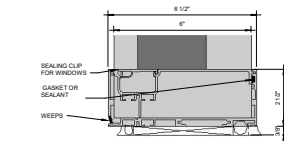
13 Callout - Window Inside Glazed -
Intermediate Horizontal 111 Vent Below
6" = 1'-0"



14 Callout - Window Sill 106 - EQ OG
6" = 1'-0"



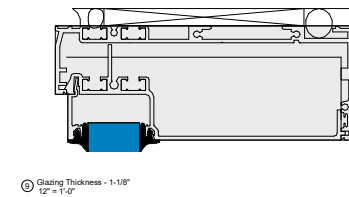
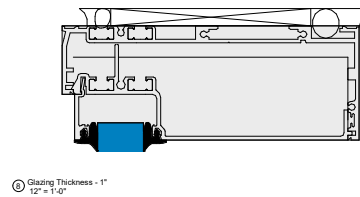
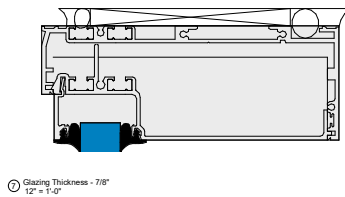
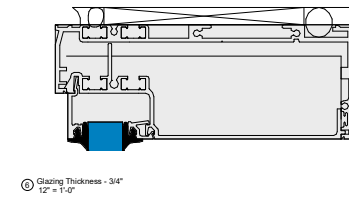
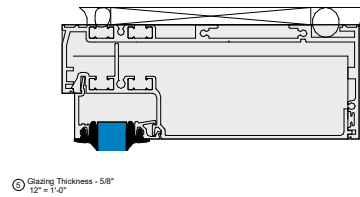
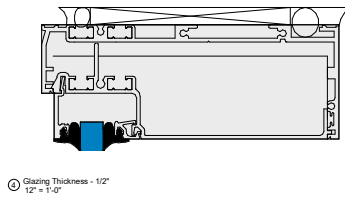
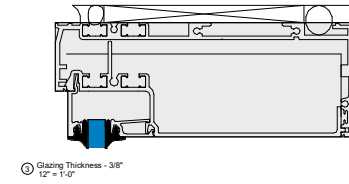
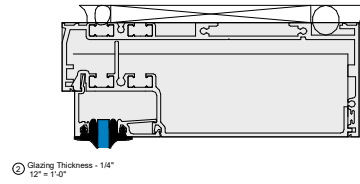
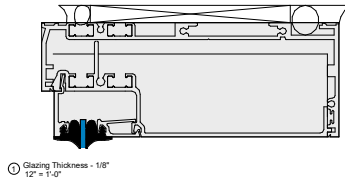
15 Callout - Window Outside Glazed Stops Up -
Sill 006 LINEQ
6" = 1'-0"

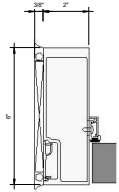


16 Callout - Window Sill 106 - EQ IG
6" = 1'-0"

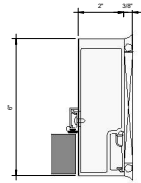
KAWNEER AN ARCONIC COMPANY

555 Guthridge Ct.
Technology Park/Atlanta
Norcross, GA 30092 USA
Tel: + 1 770 449 5555

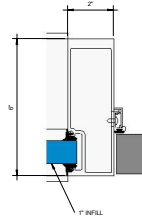




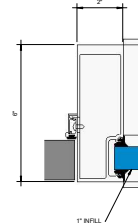
① Callout - Door - Non-Thermal Jamb Left
6" = 1'-0"



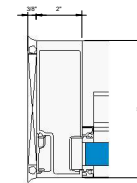
② Callout - Door - Non-Thermal Jamb Right
6" = 1'-0"



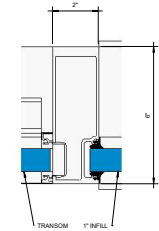
③ Callout - Door - Non-Thermal Jamb with
Pocket Left
6" = 1'-0"



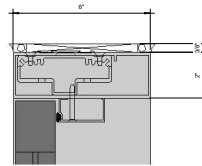
④ Callout - Door - Non-Thermal Jamb with
Pocket Right
6" = 1'-0"



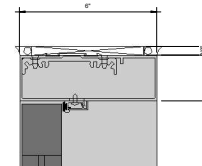
⑤ Callout - Door - Non-Thermal Transom
Jamb
6" = 1'-0"



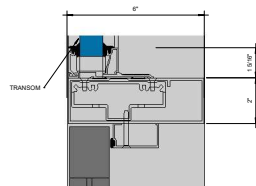
⑥ Callout - Door - Non-Thermal Transom
Jamb with Pocket Left
6" = 1'-0"



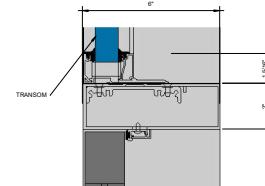
⑦ Callout - Door - Non-Thermal Head - CoC
6" = 1'-0"



⑧ Callout - Door - Non-Thermal Head
6" = 1'-0"



⑨ Callout - Door - Non-Thermal Transom
Head - CoC
6" = 1'-0"



⑩ Callout - Door - Non-Thermal Transom
Head
6" = 1'-0"