

CASE STUDY

# GRAND HYATT NASHVILLE NASHVILLE, TENNESSEE





The Grand Hyatt Nashville is located in the heart of downtown Nashville and offers 591 rooms and 53 suites featuring floor-to-ceiling windows that provide abundant natural light. The Kawneer Collaborative team worked diligently to meet the design, budget and schedule challenges of this unique and distinctive project.

To meet the aesthetic and performance challenges of the ambitious development required significant elements of curtain wall. Kawneer Collaborative utilized numerous Kawneer facade, window and entrance solutions, including unitized 2500 UT Unitwall® System, which added elegance to ultra-thermal performance, helping to meet the demands of the landmark structure.

**Architect:** HKS, Atlanta, GA  
**Developer:** Southwest Value Partners, Nashville, TN  
**Glazing Contractor:** Physical Security, Bessemer, AL  
**General Contractor:** Clark Construction Group, Nashville, TN  
and Bell & Associates Construction, Ooltewah, TN

Photography: © The Apple Group



## MORE THAN A HOTEL – AN ICON

The Grand Hyatt Nashville is an 18-acre hotel and mixed-use development that was the first project of Nashville Yards. The development is not just a luxury hotel but also an iconic symbol that represents a next-generation sense of place.

The architects of this 25-story luxury hotel prioritized the building's vertical design to make it visually compelling among the other striking developments in the project. To accomplish this, they needed a system that would support large vertical elements while still allowing natural light into the structure. Kawneer's 1600 Wall System®1 Curtain Wall and custom-designed window wall solution met aesthetic and performance requirements while also achieving the necessary thermal goals of the new build. Occupants can enjoy attractive views and bright, airy spaces.

Kawneer also provided 500 Wide Stile Standard Entrances, known for their superb durability and security.

Collaboration was key to this project with Kawneer Collaborative assisting the glazing contractor in the planning, pricing and procurement process, navigating the complexities and securing the contract from the general contractor.

The Grand Hyatt Nashville was voted as the ' #1 New Hotel in America ' in 2020 by USA Today readers due, in part, to the impressive visual impact of the realized design.

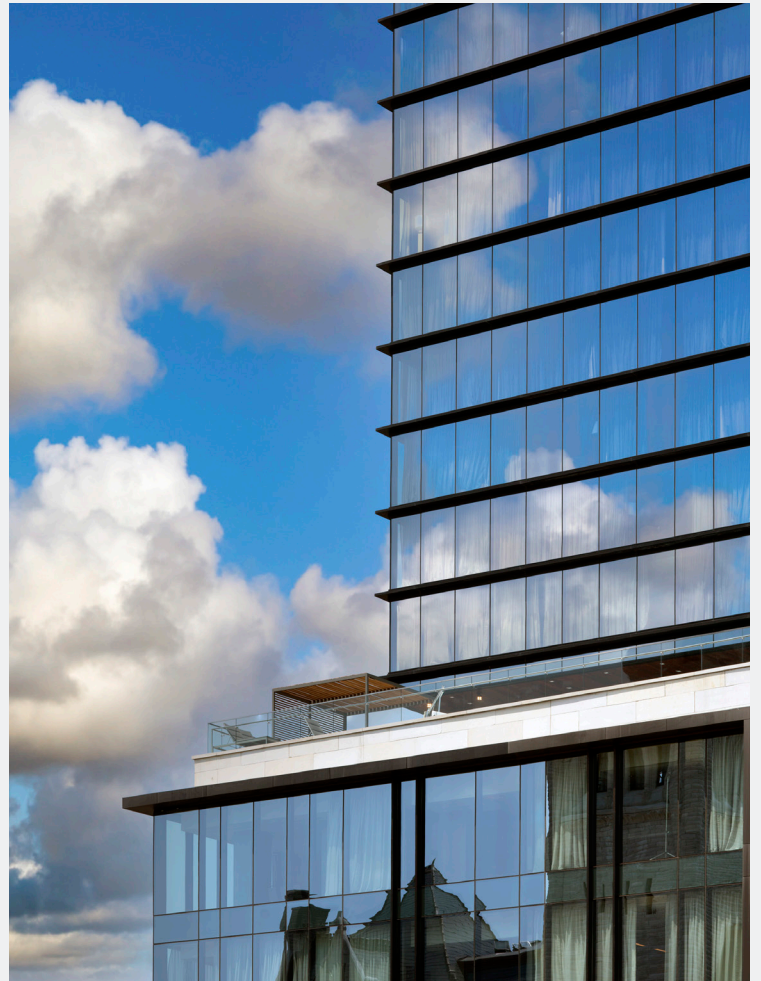






## CHALLENGES

- The project called for both excellent thermal performance and eye-catching aesthetics that would go beyond what is typical for luxury hotels.
- Ensuring a seamless construction process was essential to meet the luxury hotel's design, budget and schedule needs.
- The team was tasked with ensuring that every level of the hotel had stunning, floor-to-ceiling views that would enhance the well-being and comfort of all occupants.







## SOLUTIONS

- The 1600 Wall System®1 Curtain Wall and 1600 Wall System®2 Curtain Wall offered design flexibility while optimizing natural light and outdoor views, increasing occupant well-being and lowering energy costs by reducing the need for artificial lighting.
- The Kawneer Collaborative team assisted in the detailed planning, pricing and procurement process. This allowed the larger team to navigate the project complexities and secure the contract from the general contractor.

## PRODUCTS USED

- 1600 Wall System®1 Curtain Wall
- 1600 Wall System®2 Curtain Wall
- 2500 UT Unitwall® System
- Clearwall® Curtain Wall System
- 500 Wide Stile Standard Entrances
- Custom window wall solution